

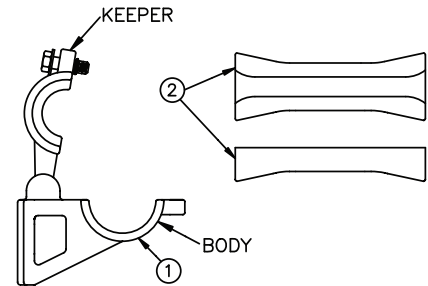
Installation Instructions for ADSS Trunnion Support

Trunnions reduce installation costs by functioning as a pull-through during installation (maximum line angle for stringing is 15° total, 7.5° per side, number of structures not to exceed 30). No block or pulley is needed provided these conditions are met.

List of Supplied Materials

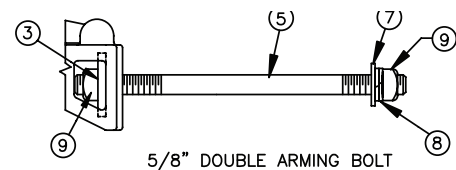
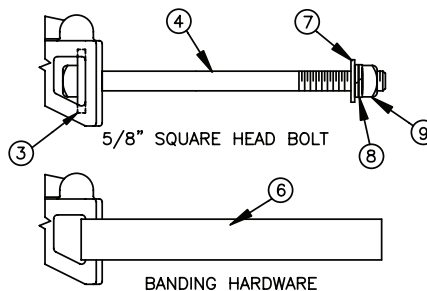
1. Trunnion Support Assembly
2. Bushings

CABLE O.D. RANGE		EST. WEIGHT		BUSHING COLOR	PART NO.
INCHES	MILLIMETERS	LBS.	KG		
0.475" - 0.525"	12.07 - 13.34	2.05	.930	Blue	ATGN475/525
0.526" - 0.575"	13.36 - 14.61	2.05	.930	Orange	ATGN526/575
0.576" - 0.625"	14.63 - 15.88	2.04	.925	Brown	ATGN576/625
0.626" - 0.675"	15.90 - 17.15	2.04	.925	Green	ATGN626/675
0.676" - 0.725"	17.17 - 18.42	2.03	.921	White	ATGN676/725
0.726" - 0.775"	18.44 - 19.69	2.03	.921	Red	ATGN726/775
0.776" - 0.825"	19.71 - 20.96	2.02	.916	Purple	ATGN776/825
0.826" - 0.875"	20.98 - 22.23	2.02	.916	Yellow	ATGN826/875
0.876" - 0.925"	22.25 - 23.50	2.02	.916	Pink	ATGN876/925



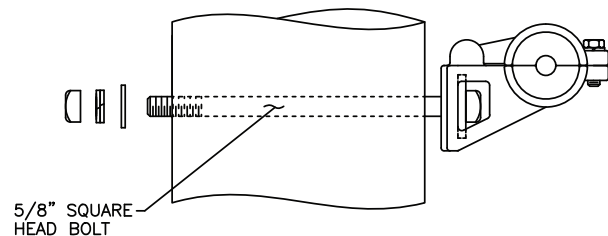
Customer Supplied Materials

3. Square Washer 2" x 2" - 5/8"
4. Square Head Bolt - 5/16"
5. Double Arming Bolt - 5/8"
6. Stainless Steel Band
7. Flat Washer - 5/8"
8. Double Coil Lock Washer
9. Square Nut - 5/8"



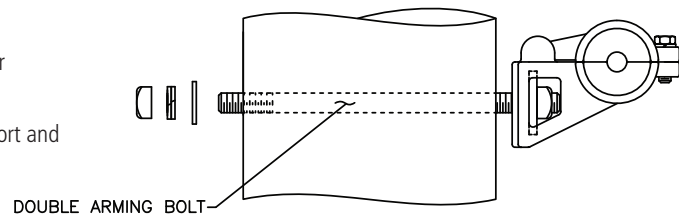
Installation Instructions – Using Square Head Bolt

1. At attachment location of ADSS Trunnion Support, drill through pole for a 5/8" diameter bolt.
2. Insert square head bolt through Square Washer, ADSS Trunnion Support and drilled hole in pole.
3. Tighten in place with flat washer, double coil lock washer and square nut. Nut to be tightened to 40 lbf-ft.



Installation Instructions – Using Double Arming Bolt

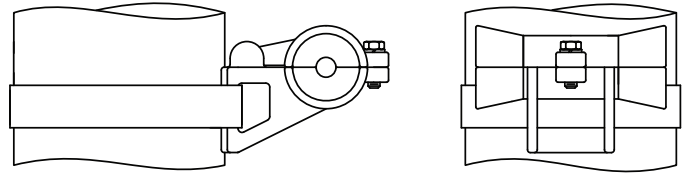
1. At attachment location of ADSS Trunnion Support, drill through pole for a 5/8" diameter bolt.
2. Insert double arming bolt through square washer, ADSS Trunnion Support and drilled hole in pole.
3. Orient ADSS Trunnion Support in proper position on pole.
4. Tighten in place with washer, double coil lock washer and nut. Nut to be tightened to 40 lbf-ft.



Installation Instructions for ADSS Trunnion Support (continued)

Installation Instructions – Using Stainless Steel Banding

1. Band the ADSS Trunnion Support securely to the pole at the approximate location.
2. The stainless steel band is to be located as illustrated (banding furnished by customer).



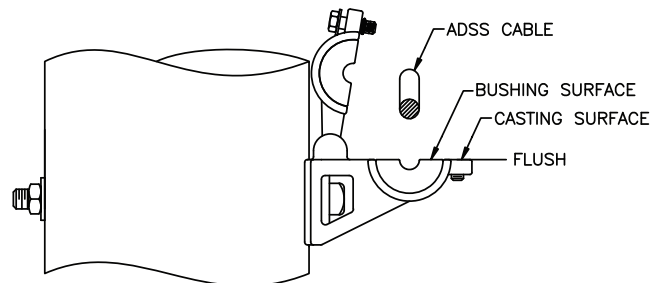
Installation Instructions – Cable Installation

NOTE: ADSS Trunnion Support is designed for short span lengths, low loads, and a maximum line angle (horizontal plane) and sag angle (vertical plane) of 22 degrees (11 degrees per side).

STRINGING: With bushings removed, the ADSS Trunnion Support can be used as a stringing device. The inside surfaces of the assembly have a smooth finish for low friction cable installation. Maximum line angle for stringing and sagging is 7.5 degrees, and a total line angle of 15 degrees. If greater line angle is encountered, use a stringing wheel. Follow cable manufacturers recommendation for stringing tensions. Amount of structures used for stringing must not exceed 30.

CLAMPING:

1. After stringing and sagging is complete, loosen 3/8" diameter clamping bolt and open the ADSS Trunnion Support.
2. Lift ADSS cable (use sling if necessary) and place bushings in assembly body and keeper. Ensure bushing is flush with casting surfaces.



3. Place cable in bushing groove. Close the assembly firmly onto the cable and the squeeze to the seat cable into the top groove. While holding the assembly closed, hand-tighten the bolt. Tighten the bolt further to 15 lbf-ft.
4. Assembly is now complete.

