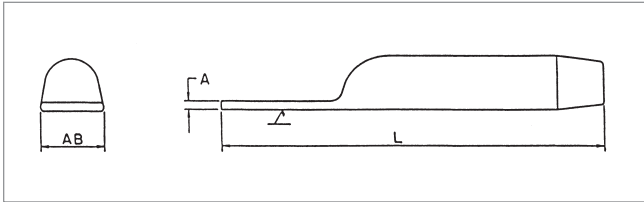


HiTemp Connector for ACSS Conductor, Straight, 5600HT Series



The 5600HT Series Straight Terminal Connector is specifically designed for ACSS conductors. It is fabricated from a specially tempered aluminum that will transfer elevated current and dissipate increased heat more efficiently.

All HiTemp Terminal Connectors are designed for limited tension use, maintaining a minimum of 40% of the ASTM rated strength of the conductor.

Square edges of the compression accessory pad can cause Corona. Pads with rounded edges and corners can be supplied by adding the catalog suffix 'EHV'.

Ordering Instructions

Step 1: Catalog Number

Determine the assembly catalog number based on the conductor being used

Step 2: Extra High Voltage Finish

For Extra High Voltage Finish, use "EHV". (≥ 345 kV)

For Standard Finish, leave blank. (< 345 kV)

Step 3: Assemble Catalog Number

Catalog Number + EHV Finish

Example:

For 795 Drake ACSS Conductor with an EHV finish, the complete catalog number is:

5630.116HTEHV

Notes:

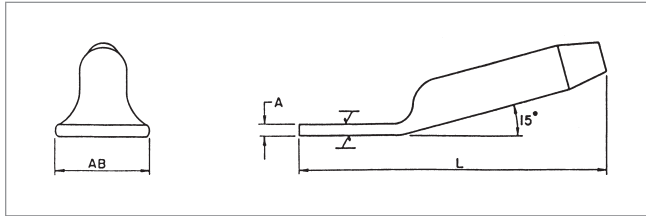
1. Pad Dimensions are on page 339.
2. HiTemp AFL Filler Compound (AFCHT) Requirements are on page 340.
3. Bolt Sizes and Torque Recommendations are on page 340.
4. Installation Instructions for Terminals are on page 351.
5. For more information on die selection and ordering instructions, see the Tools and Equipment section of this catalog.

Catalog Number	Conductor				Die Size	Weight		Total Length L		Pad Size
	Code Name	Size	Stranding	Diameter		lbs	kg	in	mm	
		kcml	Al/St	in						
5676.688HT	Partridge/ACSS	266.8	26/7	0.642	76AH	0.6	0.3	8.6	218	D
5620.781HT	Woodcock/ACSS	336.4	22/7	0.701	20AH	0.6	0.3	8.9	226	D
5620.812HT	Linnet/ACSS	336.4	26/7	0.720	20AH	0.6	0.3	8.9	226	D
5620.781HT	Oriole/ACSS	336.4	30/7	0.741	20AH	0.6	0.3	8.9	226	D
5620.812HT	Ptarmigan/ACSS	397.5	20/7	0.752	20AH	0.6	0.3	8.9	226	D
5620.812HT	Brant/ACSS	397.5	24/7	0.772	20AH	0.6	0.3	8.9	226	D
5620.844HT	Ibis/ACSS	397.5	26/7	0.783	20AH	0.6	0.3	8.9	226	D
5620.844HT	Lark/ACSS	397.5	30/7	0.806	20AH	0.6	0.3	8.9	226	D
5620.875HT	Tailorbird/ACSS	477.0	20/7	0.823	20AH	0.6	0.3	9.6	244	D
5624.938HT	Flicker/ACSS	477.0	24/7	0.846	24AH	1.0	0.4	9.6	244	D
5624.938HT	Hawk/ACSS	477.0	26/7	0.858	24AH	1.0	0.4	9.6	244	D
5624.938HT	Hen/ACSS	477.0	30/7	0.883	24AH	1.0	0.4	9.6	244	D
5624.969HT	Sapsucker/ACSS	556.5	22/7	0.901	24AH	1.0	0.4	9.6	244	D
5624.969HT	Parakeet/ACSS	556.5	24/7	0.914	24AH	1.0	0.4	9.6	244	D
5627.100HT	Dove/ACSS	556.5	26/7	0.927	27AH	2.2	1.0	17.1	434	D
5627.100HT	Eagle/ACSS	556.5	30/7	0.953	27AH	2.2	1.0	17.1	434	D
5627.100HT	Peacock/ACSS	605.0	24/7	0.953	27AH	2.2	1.0	17.1	434	D
5627.100HT	Squab/ACSS	605.0	26/7	0.966	27AH	2.2	1.0	17.1	434	D
5627.106HT	Wood Duck/ACSS	605.0	30/7	0.994	27AH	2.2	1.0	17.1	434	D
5627.106HT	Teal/ACSS	605.0	30/19	0.994	27AH	2.2	1.0	17.1	434	D
5627.106HT	Goldfinch/ACSS	636.0	22/7	0.963	27AH	2.2	1.0	17.1	434	D

HiTemp Connector for ACSS Conductor, Straight, 5600HT Series (cont.)

Catalog Number	Conductor				Die Size	Weight		Total Length L		Pad Size
	Code Name	Size	Stranding	Diameter		lbs	kg	in	mm	
		kcmil	Al/St	in						
5627.106HT	Rook/ACSS	636.0	24/7	0.977	27AH	2.2	1.0	17.1	434	D
5627.106HT	Grosbeak/ACSS	636.0	26/7	0.990	27AH	2.2	1.0	17.1	434	D
5627.106HT	Scoter/ACSS	636.0	30/7	1.019	27AH	2.2	1.0	17.1	434	D
5627.106HT	Egret/ACSS	636.0	30/19	1.019	27AH	2.2	1.0	17.1	434	D
5627.106HT	Flamingo/ACSS	666.6	24/7	1.000	27AH	2.2	1.0	17.1	434	D
5627.106HT	Gannet/ACSS	666.6	26/7	1.014	27AH	2.2	1.0	17.1	434	D
5630.109HT	Stilt/ACSS	715.5	24/7	1.036	30AH	3.1	1.4	18.3	465	D
5630.116HT	Starling/ACSS	715.5	26/7	1.051	30AH	2.9	1.3	18.5	471	D
5360.116HT	Redwing/ACSS	715.5	30/19	1.081	30AH	2.9	1.3	18.5	471	D
5630.116HT	Cuckoo/ACSS	795.0	24/7	1.092	30AH	2.9	1.3	18.5	471	D
5630.122HT	Drake/ACSS	795.0	26/7	1.108	30AH	2.9	1.3	18.5	471	D
5630.116HT	Macaw/ACSS	795.0	42/7	1.055	30AH	2.9	1.3	18.5	471	D
5630.116HT	Tern/ACSS	795.0	45/7	1.063	30AH	2.9	1.3	18.5	471	D
5630.116HT	Condor/ACSS	795.0	54/7	1.092	30AH	2.9	1.3	18.5	471	D
5630.122HT	Mallard/ACSS	795.0	30/19	1.140	30AH	2.8	1.3	18.7	476	D
5630.122HT	Ruddy/ACSS	900.0	45/7	1.131	30AH	2.8	1.3	18.7	476	D
5630.122HT	Canary/ACSS	900.0	54/7	1.162	30AH	2.8	1.3	18.7	476	D
5630.125HT	Cornrake/ACSS	954.0	20/7	1.165	30AH	2.8	1.3	18.8	477	D
5630.125HT	Redbird/ACSS	954.0	24/7	1.196	30AH	2.8	1.3	18.8	477	D
5630.122HT	Rail/ACSS	954.0	45/7	1.165	30AH	2.8	1.3	18.8	477	D
5630.125HT	Towhee/ACSS	954.0	48/7	1.175	30AH	2.8	1.3	18.8	477	D
5630.125HT	Cardinal/ACSS	954.0	54/7	1.196	30AH	2.8	1.3	18.8	477	D
5634.134HT	Canvasback/ACSS	954.0	30/19	1.248	34AH	4.0	1.8	19.7	500	D
5634.128HT	Snowbird/ACSS	1033.5	42/7	1.203	34AH	4.2	1.9	19.3	500	D
5634.134HT	Ortolan/ACSS	1033.5	45/7	1.212	34AH	4.0	1.8	19.7	500	D
5634.134HT	Curlew/ACSS	1033.5	54/7	1.245	34AH	4.0	1.8	19.7	500	D
5634.134HT	Bluejay/ACSS	1113.0	45/7	1.259	34AH	4.0	1.8	19.7	500	D
5634.138HT	Finch/ACSS	1113.0	54/19	1.293	34AH	4.0	1.8	20.0	508	D
5634.138HT	Bunting/ACSS	1192.5	45/7	1.302	34AH	4.0	1.8	20.0	508	D
5636.144HT	Grackle/ACSS	1192.5	54/19	1.338	36AH	4.5	2.0	20.5	522	D
5636.144HT	Bittern/ACSS	1272.0	45/7	1.345	36AH	4.5	2.0	20.5	522	D
5636.144HT	Diver/ACSS	1272.0	48/7	1.357	36AH	4.5	2.0	20.5	522	D
5636.147HT	Pheasant/ACSS	1272.0	54/19	1.382	36AH	4.4	2.0	20.1	511	D
5636.147HT	Dipper/ACSS	1351.5	45/7	1.386	36AH	4.4	2.0	20.1	511	D
5638.156HT	Martin/ACSS	1351.5	54/19	1.424	38AH	5.1	2.4	21.8	555	D
5638.150HT	Bobolink/ACSS	1431.0	45/7	1.427	38AH	5.4	2.4	21.1	536	D
5638.156HT	Plover/ACSS	1431.0	54/19	1.465	38AH	5.1	2.3	21.8	555	D
5638.156HT	Nuthatch/ACSS	1510.0	45/7	1.466	38AH	5.1	2.3	21.8	555	D
5640.162HT	Parrot/ACSS	1510.0	54/19	1.505	40AH	5.9	2.7	22.5	572	E
5640.162HT	Ratite/ACSS	1590.0	42/7	1.492	40AH	5.9	2.7	22.5	572	E
5640.162HT	Lapwing/ACSS	1590.0	45/7	1.504	40AH	5.9	2.7	22.5	572	E
5640.162HT	Falcon/ACSS	1590.0	54/19	1.544	40AH	5.9	2.7	22.5	572	E
5642.178HT	Chukar/ACSS	1780.0	84/19	1.602	42AH	6.4	2.9	23.0	584	E
5642.178HT	Mockingbird/ACSS	2034.5	72/7	1.681	42AH	6.4	2.9	23.0	584	E
5642.178HT	Roadrunner/ACSS	2057.0	76/19	1.700	42AH	6.4	2.9	23.0	584	E
5644.184HT	Bluebird/ACSS	2156.0	84/19	1.762	44AH	7.5	3.4	23.5	598	E
5644.181HT	Kiwi/ACSS	2167.0	72/7	1.735	44AH	7.5	3.4	23.5	598	E
5644.188HT	Thrasher/ACSS	2312.0	76/19	1.802	44AH	7.5	3.4	23.5	598	E
5648.197HT	Joree/ACSS	2515.0	76/19	1.880	48AH	8.7	4.0	25.6	650	E

HiTemp Terminal Connector for ACSS Conductor, 15°, 5100HT Series



The 5100HT Series 15° Terminal Connector is specifically designed for ACSS conductors. It is fabricated from a specially tempered aluminum that will transfer elevated current and dissipate increased heat more efficiently.

When used with the HiTemp Dead End, the 15° terminal connector can be bolted in either the straight or 30° position. All HiTemp Terminal Connectors are designed for limited tension use, maintaining a minimum of 40% of the ASTM rated strength of the conductor. Aluminum hardware is supplied with the 15° terminal connector.

Square edges of the compression accessory pad can cause Corona. Pads with rounded edges and corners can be supplied by adding the catalog suffix 'EHV'.

Ordering Instructions

Step 1: Catalog Number

Determine the assembly catalog number based on the conductor being used.

Step 2: Extra High Voltage Finish

For Extra High Voltage Finish, use "EHV". (≥ 345 kV)

For Standard Finish, leave blank. (< 345 kV)

Step 3: Assemble Catalog Number

+

Example:

For 795 Drake ACSS Conductor with an EHV finish, the complete catalog number is:

5130.116HTEHV

Notes:

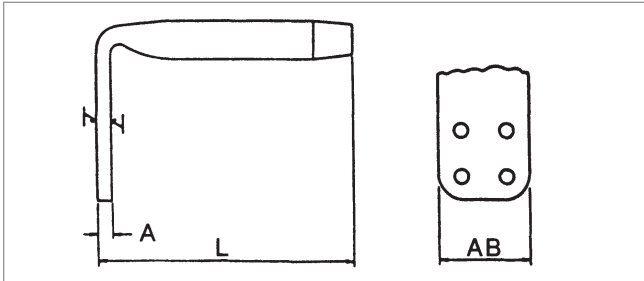
1. Pad Dimensions are on page 339.
2. HiTemp AFL Filler Compound (AFCHT) Requirements are on page 340.
3. Bolt Sizes and Torque Recommendations are on page 340.
4. Installation Instructions for Terminals are on page 351.
5. For more information on die selection and ordering instructions, see the Tools and Equipment section of this catalog.

Catalog Number	Code Name	Conductor			Die Size	Weight		Total Length L		Pad Size
		Size kcmil	Stranding Al/St	Diameter in		lbs	kg	in	mm	
5176.688HT	Partridge/ACSS	266.8	26/7	0.642	76AH	1.6	0.7	13.1	333	D
5120.781HT	Woodcock/ACSS	336.4	22/7	0.701	20AH	1.6	0.7	13.2	335	D
5120.812HT	Linnet/ACSS	336.4	26/7	0.720	20AH	1.6	0.7	13.2	335	D
5120.781HT	Oriole/ACSS	336.4	30/7	0.741	20AH	1.6	0.7	13.2	335	D
5120.812HT	Ptarmigan/ACSS	397.5	20/7	0.752	20AH	1.6	0.7	13.2	335	D
5120.812HT	Brant/ACSS	397.5	24/7	0.772	20AH	1.6	0.7	13.2	335	D
5120.844HT	Ibis/ACSS	397.5	26/7	0.783	20AH	1.6	0.7	13.2	335	D
5120.844HT	Lark/ACSS	397.5	30/7	0.806	20AH	1.6	0.7	13.2	335	D
5120.875HT	Tailorbird/ACSS	477.0	20/7	0.823	20AH	1.7	0.8	14.0	356	D
5124.938HT	Flicker/ACSS	477.0	24/7	0.846	24AH	2.0	0.9	13.9	353	D
5124.938HT	Hawk/ACSS	477.0	26/7	0.858	24AH	2.0	0.9	13.9	353	D
5124.938HT	Hen/ACSS	477.0	30/7	0.883	24AH	2.0	0.9	13.9	353	D
5124.969HT	Sapsucker/ACSS	556.5	22/7	0.901	24AH	2.0	0.9	13.9	353	D
5124.969HT	Parakeet/ACSS	556.5	24/7	0.914	24AH	2.0	0.9	13.9	353	D
5127.100HT	Dove/ACSS	556.5	26/7	0.927	27AH	2.5	1.1	16.3	414	D
5127.100HT	Eagle/ACSS	556.5	30/7	0.953	27AH	2.5	1.1	16.3	414	D
5127.100HT	Peacock/ACSS	605.0	24/7	0.953	27AH	2.5	1.1	16.3	414	D
5127.100HT	Squab/ACSS	605.0	26/7	0.966	27AH	2.5	1.1	16.3	414	D
5127.106HT	Wood Duck/ACSS	605.0	30/7	0.994	27AH	2.4	1.1	16.3	414	D
5127.106HT	Teal/ACSS	605.0	30/19	0.994	27AH	2.4	1.1	16.3	414	D
5127.106HT	Goldfinch/ACSS	636.0	22/7	0.963	27AH	2.5	1.1	16.3	414	D

HiTemp Terminal Connector for ACSS Conductor, 15°, 5100HT Series (cont.)

Catalog Number	Code Name	Conductor			Die Size	Weight		Total Length L		Pad Size
		Size	Stranding	Diameter		lbs	kg	in	mm	
		kcmil	Al/St	in						
5127.106HT	Rook/ACSS	636.0	24/7	0.977	27AH	2.4	1.1	16.3	414	D
5127.106HT	Grosbeak/ACSS	636.0	26/7	0.990	27AH	2.4	1.1	16.3	414	D
5127.106HT	Scoter/ACSS	636.0	30/7	1.019	27AH	2.4	1.1	16.3	414	D
5127.106HT	Egret/ACSS	636.0	30/19	1.019	27AH	2.4	1.1	16.3	414	D
5127.106HT	Flamingo/ACSS	666.6	24/7	1.000	27AH	2.4	1.1	16.3	414	D
5127.106HT	Gannet/ACSS	666.6	26/7	1.014	27AH	2.4	1.1	16.3	414	D
5130.109HT	Stilt/ACSS	715.5	24/7	1.036	30AH	3.4	1.5	17.5	445	D
5130.116HT	Starling/ACSS	715.5	26/7	1.051	30AH	3.3	1.5	17.8	452	D
5130.116HT	Redwing/ACSS	715.5	30/19	1.081	30AH	3.3	1.5	17.8	452	D
5130.116HT	Cuckoo/ACSS	795.0	24/7	1.092	30AH	3.3	1.5	17.8	452	D
5130.122HT	Drake/ACSS	795.0	26/7	1.108	30AH	3.3	1.5	17.8	452	D
5130.116HT	Macaw/ACSS	795.0	42/7	1.055	30AH	3.3	1.5	17.8	452	D
5130.116HT	Tern/ACSS	795.0	45/7	1.063	30AH	3.3	1.5	17.8	452	D
5130.116HT	Condor/ACSS	795.0	54/7	1.092	30AH	3.3	1.5	17.8	452	D
5130.122HT	Mallard/ACSS	795.0	30/19	1.140	30AH	3.1	1.4	18.1	460	D
5130.122HT	Ruddy/ACSS	900.0	45/7	1.131	30AH	3.1	1.4	18.1	460	D
5130.122HT	Canary/ACSS	900.0	54/7	1.162	30AH	3.1	1.4	18.1	460	D
5130.122HT	Corncrake/ACSS	954.0	20/7	1.165	30AH	3.1	1.4	18.1	460	D
5130.125HT	Redbird/ACSS	954.0	24/7	1.196	30AH	3.1	1.4	18.3	465	D
5130.122HT	Rail/ACSS	954.0	45/7	1.165	30AH	3.1	1.4	18.1	460	D
5130.125HT	Towhee/ACSS	954.0	48/7	1.175	30AH	3.1	1.4	18.3	465	D
5130.125HT	Cardinal/ACSS	954.0	54/7	1.196	30AH	3.1	1.4	18.3	465	D
5134.134HT	Canvasback/ACSS	954.0	30/19	1.248	34AH	4.4	2.0	18.3	465	D
5134.128HT	Snowbird/ACSS	1033.5	42/7	1.203	34AH	4.5	2.0	18.1	460	D
5134.134HT	Ortolan/ACSS	1033.5	45/7	1.212	34AH	4.4	2.0	18.3	465	D
5134.134HT	Curlew/ACSS	1033.5	54/7	1.245	34AH	4.4	2.0	18.3	465	D
5134.134HT	Bluejay/ACSS	1113.0	45/7	1.259	34AH	4.4	2.0	18.3	465	D
5134.138HT	Finch/ACSS	1113.0	54/19	1.293	34AH	4.2	1.9	18.4	467	D
5134.138HT	Bunting/ACSS	1192.5	45/7	1.302	34AH	4.2	1.9	18.4	467	D
5136.144HT	Grackle/ACSS	1192.5	54/19	1.338	36AH	4.7	2.1	19.1	485	D
5136.144HT	Bittern/ACSS	1272.0	45/7	1.345	36AH	4.7	2.1	19.1	485	D
5136.144HT	Diver/ACSS	1272.0	48/7	1.357	36AH	4.7	2.1	19.1	485	D
5136.147HT	Pheasant/ACSS	1272.0	54/19	1.382	36AH	4.7	2.1	19.0	483	D
5136.147HT	Dipper/ACSS	1351.5	45/7	1.386	36AH	4.7	2.1	19.0	483	D
5138.156HT	Martin/ACSS	1351.5	54/19	1.424	38AH	5.5	2.5	20.5	521	D
5138.150HT	Bobolink/ACSS	1431.0	45/7	1.427	38AH	5.6	2.5	19.6	498	D
5138.156HT	Plover/ACSS	1431.0	54/19	1.465	38AH	5.5	2.5	20.5	521	D
5138.156HT	Nuthatch/ACSS	1510.0	45/7	1.466	38AH	5.5	2.5	20.5	521	D
5140.162HT	Parrot/ACSS	1510.0	54/19	1.505	40AH	6.4	2.9	21.3	541	E
5140.162HT	Ratite/ACSS	1590.0	42/7	1.492	40AH	6.4	2.9	21.3	541	E
5140.162HT	Lapwing/ACSS	1590.0	45/7	1.504	40AH	6.4	2.9	21.3	541	E
5140.162HT	Falcon/ACSS	1590.0	54/19	1.544	40AH	6.4	2.9	21.3	541	E
5142.178HT	Chukar/ACSS	1780.0	84/19	1.602	42AH	6.9	3.1	22.3	566	E
5142.178HT	Mockingbird/ACSS	2034.5	72/7	1.681	42AH	6.9	3.1	22.3	566	E
5142.178HT	Roadrunner/ACSS	2057.0	76/19	1.700	42AH	6.9	3.1	22.3	566	E
5144.184HT	Bluebird/ACSS	2156.0	84/19	1.762	44AH	8.0	3.6	22.4	569	E
5144.181HT	Kiwi/ACSS	2167.0	72/7	1.735	44AH	8.0	3.6	22.4	569	E
5144.188HT	Thrasher/ACSS	2312.0	76/19	1.802	44AH	8.0	3.6	22.4	569	E
5148.197HT	Joree/ACSS	2515.0	76/19	1.880	48AH	8.7	3.9	24.2	615	E

HiTemp Terminal Connector for ACSS Conductor, 90°, 5800HT Series



The 5800HT Series 90° Terminal Connector is specifically designed for ACSS conductors. It is fabricated from a specially tempered aluminum that will transfer elevated current and dissipate increased heat more efficiently.

All HiTemp Terminal Connectors are designed for limited tension use, maintaining a minimum of 40% of the ASTM rated strength of the conductor.

Square edges of the compression accessory pad can cause Corona. Pads with rounded edges and corners can be supplied by adding the catalog suffix 'EHV'.

Ordering Instructions

Step 1: Catalog Number

Determine the assembly catalog number based on the conductor being used.

Step 2: Extra High Voltage Finish

For Extra High Voltage Finish, use "EHV". (≥ 345 kV)

For Standard Finish, leave blank. (< 345 kV)

Step 3: Assemble Catalog Number

+

Example:

For 795 Drake ACSS Conductor with an E pad and EHV finish, the complete catalog number is:

5830.116HTEEHV

Notes:

1. Pad Dimensions are on page 339.
2. HiTemp AFL Filler Compound (AFCHT) Requirements are on page 340.
3. Bolt Sizes and Torque Recommendations are on page 340.
4. Installation Instructions for Terminals are on page 351.
5. For more information on die selection and ordering instructions, see the Tools and Equipment section of this catalog.

Catalog Number	Conductor				Die Size	Weight		Total Length L		Pad Size
	Code Name	Size	Stranding	Diameter		lbs	kg	in	mm	
		kcml	Al/St	in						
5876.688HT	Partridge/ACSS	266.8	26/7	0.642	76AH	1.3	0.6	11.2	289	D
5820.781HT	Woodcock/ACSS	336.4	22/7	0.701	20AH	1.3	0.6	10.8	274	D
5820.812HT	Linnet/ACSS	336.4	26/7	0.720	20AH	1.3	0.6	10.8	274	D
5820.781HT	Oriole/ACSS	336.4	30/7	0.741	20AH	1.3	0.6	10.8	274	D
5820.812HT	Ptarmigan/ACSS	397.5	20/7	0.752	20AH	1.3	0.6	10.8	274	D
5820.812HT	Brant/ACSS	397.5	24/7	0.772	20AH	1.3	0.6	10.8	274	D
5820.844HT	Ibis/ACSS	397.5	26/7	0.783	20AH	1.2	0.5	10.7	272	D
5820.844HT	Lark/ACSS	397.5	30/7	0.806	20AH	1.2	0.5	10.7	272	D
5820.875HT	Tailorbird/ACSS	477.0	20/7	0.823	20AH	1.2	0.5	11.4	290	D
5824.938HT	Flicker/ACSS	477.0	24/7	0.846	24AH	2.0	0.9	11.4	290	D
5824.938HT	Hawk/ACSS	477.0	26/7	0.858	24AH	2.0	0.9	11.4	290	D
5824.938HT	Hen/ACSS	477.0	30/7	0.883	24AH	2.0	0.9	11.4	290	D
5824.969HT	Sapsucker/ACSS	556.5	22/7	0.901	24AH	2.0	0.9	11.4	290	D
5824.969HT	Parakeet/ACSS	556.5	24/7	0.914	24AH	2.0	0.9	11.4	290	D
5827.100HT	Dove/ACSS	556.5	26/7	0.927	27AH	2.4	1.1	12.8	325	D
5827.100HT	Eagle/ACSS	556.5	30/7	0.953	27AH	2.4	1.1	12.8	325	D
5827.100HT	Peacock/ACSS	605.0	24/7	0.953	27AH	2.4	1.1	12.8	325	D
5827.100HT	Squab/ACSS	605.0	26/7	0.966	27AH	2.4	1.1	12.8	325	D
5827.106HT	Wood Duck/ACSS	605.0	30/7	0.994	27AH	2.4	1.1	12.8	325	D
5827.106HT	Teal/ACSS	605.0	30/19	0.994	27AH	2.4	1.1	12.8	325	D
5827.106HT	Goldfinch/ACSS	636.0	22/7	0.963	27AH	2.4	1.1	12.8	325	D
5827.106HT	Rook/ACSS	636.0	24/7	0.977	27AH	2.4	1.1	12.8	325	D
5827.106HT	Grosbeak/ACSS	636.0	26/7	0.990	27AH	2.4	1.1	12.8	325	D

HiTemp Terminal Connector for ACSS Conductor, 90°, 5800HT Series (cont.)

Catalog Number	Conductor				Die Size	Weight		Total Length L		Pad Size
	Code Name	Size	Stranding	Diameter		lbs	kg	in	mm	
		kcmil	Al/St	in						
5827.106HT	Scoter/ACSS	636.0	30/7	1.019	27AH	2.4	1.1	12.8	325	D
5827.106HT	Egret/ACSS	636.0	30/19	1.019	27AH	2.4	1.1	12.8	325	D
5827.106HT	Flamingo/ACSS	666.6	24/7	1.000	27AH	2.4	1.1	12.8	325	D
5827.106HT	Gannet/ACSS	666.6	26/7	1.014	27AH	2.4	1.1	12.8	325	D
5830.109HT	Stilt/ACSS	715.5	24/7	1.036	30AH	3.3	1.5	14.2	361	D
5830.116HT	Starling/ACSS	715.5	26/7	1.051	30AH	3.3	1.5	14.5	368	D
5830.116HT	Redwing/ACSS	715.5	30/19	1.081	30AH	3.2	1.5	14.5	368	D
5830.116HT	Cuckoo/ACSS	795.0	24/7	1.092	30AH	3.2	1.5	14.5	368	D
5830.122HT	Drake/ACSS	795.0	26/7	1.108	30AH	3.2	1.5	14.5	368	D
5830.116HT	Macaw/ACSS	795.0	42/7	1.055	30AH	3.2	1.5	14.5	368	D
5830.116HT	Tern/ACSS	795.0	45/7	1.063	30AH	3.2	1.5	14.5	368	D
5830.116HT	Condor/ACSS	795.0	54/7	1.092	30AH	3.2	1.5	14.5	368	D
5830.122HT	Mallard/ACSS	795.0	30/19	1.140	30AH	3.0	1.4	14.7	373	D
5830.122HT	Ruddy/ACSS	900.0	45/7	1.131	30AH	3.0	1.4	14.7	373	D
5830.122HT	Canary/ACSS	900.0	54/7	1.162	30AH	3.0	1.4	14.7	373	D
5830.122HT	Corncrake/ACSS	954.0	20/7	1.165	30AH	3.0	1.4	14.7	373	D
5830.125HT	Redbird/ACSS	954.0	24/7	1.196	30AH	3.0	1.4	14.7	373	D
5830.122HT	Rail/ACSS	954.0	45/7	1.165	30AH	3.0	1.4	14.7	373	D
5830.125HT	Towhee/ACSS	954.0	48/7	1.175	30AH	3.0	1.4	14.7	373	D
5830.125HT	Cardinal/ACSS	954.0	54/7	1.196	30AH	3.0	1.4	14.7	373	D
5834.134HT	Canvasback/ACSS	954.0	30/19	1.248	34AH	4.3	2.0	15.5	394	D
5834.128HT	Snowbird/ACSS	1033.5	42/7	1.203	34AH	4.4	2.0	15.5	394	D
5834.134HT	Ortolan/ACSS	1033.5	45/7	1.212	34AH	4.3	2.0	15.5	394	D
5834.134HT	Curlew/ACSS	1033.5	54/7	1.245	34AH	4.3	2.0	15.5	394	D
5834.134HT	Bluejay/ACSS	1113.0	45/7	1.259	34AH	4.3	2.0	15.5	394	D
5834.138HT	Finch/ACSS	1113.0	54/19	1.293	34AH	4.3	2.0	15.5	394	D
5834.138HT	Bunting/ACSS	1192.5	45/7	1.302	34AH	4.2	1.9	15.5	394	D
5836.144HT	Grackle/ACSS	1192.5	54/19	1.338	36AH	4.6	2.1	16.1	409	D
5836.144HT	Bittern/ACSS	1272.0	45/7	1.345	36AH	4.6	2.1	16.1	409	D
5836.144HT	Diver/ACSS	1272.0	48/7	1.357	36AH	4.6	2.1	16.1	409	D
5836.147HT	Pheasant/ACSS	1272.0	54/19	1.382	36AH	4.6	2.1	16.1	409	D
5836.147HT	Dipper/ACSS	1351.5	45/7	1.386	36AH	4.6	2.1	16.1	409	D
5838.156HT	Martin/ACSS	1351.5	54/19	1.424	38AH	5.4	2.5	17.6	447	D
5838.150HT	Bobolink/ACSS	1431.0	45/7	1.427	38AH	5.5	2.5	16.6	422	D
5838.156HT	Plover/ACSS	1431.0	54/19	1.465	38AH	5.4	2.5	17.6	447	D
5838.156HT	Nuthatch/ACSS	1510.0	45/7	1.466	38AH	5.4	2.5	17.6	447	D
5840.162HT	Parrot/ACSS	1510.0	54/19	1.505	40AH	6.1	2.8	17.3	439	E
5840.162HT	Ratite/ACSS	1590.0	42/7	1.492	40AH	6.1	2.8	17.3	439	E
5840.162HT	Lapwing/ACSS	1590.0	45/7	1.504	40AH	6.1	2.8	17.3	439	E
5840.162HT	Falcon/ACSS	1590.0	54/19	1.544	40AH	6.1	2.8	17.3	439	E
5842.178HT	Chukar/ACSS	1780.0	84/19	1.602	42AH	7.0	3.2	18.5	470	E
5842.178HT	Mockingbird/ACSS	2034.5	72/7	1.681	42AH	7.0	3.2	18.5	470	E
5842.178HT	Roadrunner/ACSS	2057.0	76/19	1.700	42AH	7.0	3.2	18.5	470	E
5844.184HT	Bluebird/ACSS	2156.0	84/19	1.762	44AH	8.3	3.8	18.7	475	E
5844.181HT	Kiwi/ACSS	2167.0	72/7	1.735	44AH	8.3	3.8	18.7	475	E
5844.188HT	Thrasher/ACSS	2312.0	76/19	1.802	44AH	8.3	3.8	18.7	475	E
5848.197HT	Joree/ACSS	2515.0	76/19	1.880	48AH	10.6	4.8	20.3	516	E