

## DOSSERT<sup>®</sup> Type DPS Split Solder Coupler

A split sleeve coupler for soldering two cables end to end. Made of pure high conductivity copper with a full hot tin dipped coating.

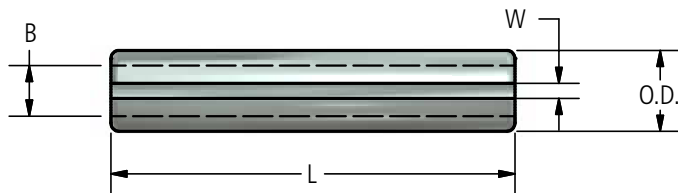


FIG. 1

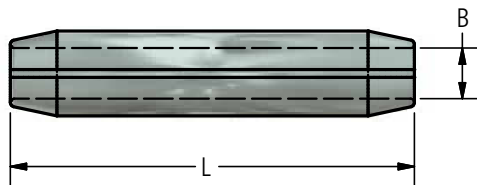
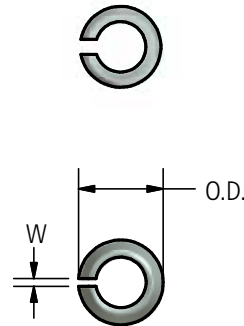


FIG. 2



### Ordering Information

CATALOG NUMBER	CABLE SIZE	FIG. NUMBER	DIMENSIONS IN INCHES			
			B	L	O.D.	W
DPS2	#6	1	.189	1 1/2	.251	.030
DPS3	#5	1	.211	1 1/2	.281	.030
DPS4	#4	1	.237	2	.315	.030
DPS5	#3	1	.265	2	.353	.030
DPS6	#2	1	.297	2	.395	.030
DPS8	#1	1	.337	2	.449	.070
DPS10	1/0	2	0.378	2	.504	.070
DPS13	2/0	2	.423	2	.565	.070
DPS17	3/0	2	.475	2	.635	.070
DPS21	4/0	2	.533	2 1/2	.713	.070
DPS25	250	2	.581	2 1/2	.778	.120
DPS30	300	2	.635	2 1/2	.849	.120
DPS35	350	2	.690	2 1/2	.920	.120
DPS40	400	2	.740	3	.986	.120
DPS45	450	2	.784	3	1.046	.120

CATALOG NUMBER	CABLE SIZE	FIG. NUMBER	DIMENSIONS IN INCHES			
			B	L	O.D.	W
DPS50	500	2	.826	3	1.102	.120
DPS55	550	2	.868	3	1.154	.175
DPS60	600	2	.906	3 1/2	1.206	.175
DPS65	650	2	.948	3 1/2	1.260	.175
DPS70	700	2	.983	3 1/2	1.307	.175
DPS75	750	2	1.018	3 1/2	1.356	.175
DPS80	800	2	1.050	4	1.400	.175
DPS85	850	2	1.083	4	1.441	.220
DPS90	900	2	1.115	4	1.483	.220
DPS95	950	2	1.145	4	1.525	.220
DPS100	1000	2	1.175	4 1/2	1.565	.220
DPS125	1250	2	1.320	4 1/2	1.754	.220
DPS150	1500	2	1.440	5	1.912	.280
DPS175	1750	2	1.560	5 1/2	2.074	.280
DPS200	2000	2	1.664	6	2.214	.280