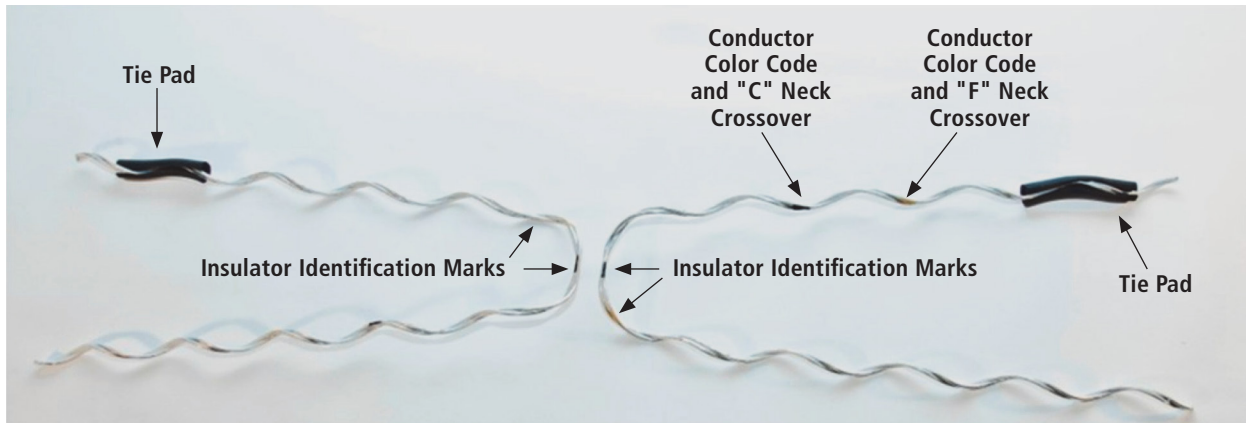


Double Side Tie with Pad

NOTE: READ AND UNDERSTAND INSTALLATION INSTRUCTIONS BEFORE INSTALL. ENSURE YOU HAVE THE CORRECT HELIFORMED PRODUCT BEFORE INSTALL IS STARTED.



Cold Application

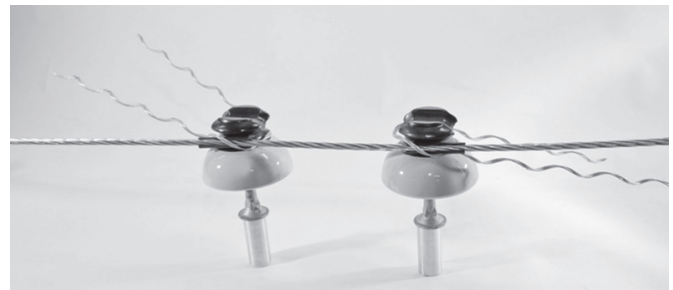
1. Apply the Tie Pads to the conductor so the conductor does not come into direct contact with the insulators.



2. Position the midpoint of each pad slightly beyond center of the insulator groove making the span between each Tie Pad larger.



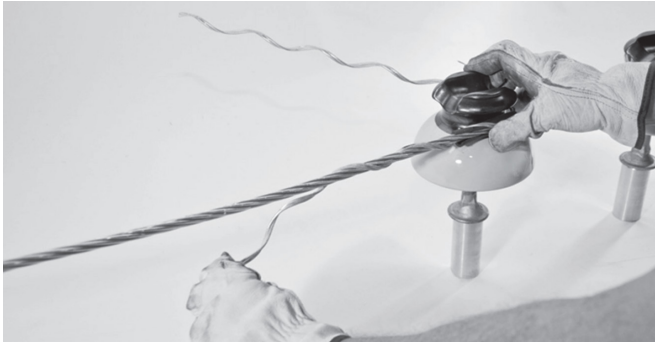
3. Install the Double Side Tie around the neck of the insulator. Ensure the leg of the tie with the crossover marking is on the same side as the conductor. Pull the tie snug against the insulator neck so that it will be properly seated.



continued >

Double Side Tie with Pad

4. Wrap the leg marked cross over around the Tie Pad. (Note: some ties have two crossover marks. The first is for C-Neck insulators and the second is for F-Neck insulators.) Continue wrapping the tie around the conductor. Ensure the Side Tie end fully snaps into place. This may require more pressure than the pressure to wrap.



5. Wrap the second leg around the insulator passing the first leg, so it crosses at one of the marks.



6. Lift up the leg and wrap it around the conductor. Ensure the Distribution Tie end fully snaps into place. This may require more pressure than the pressure to wrap.



7. One side is now complete. Repeat steps 3-6 to the other side with the second tie. (Note: Wrap the tie over the pad in this installation.)



Safety

1. Double Side Ties are precision devices. They should be stored in covered cartons and handled carefully.
2. This application procedure is NOT intended to supersede any company construction or safety standards. This procedure is offered only to illustrate safe application for the individual. Failure to follow these procedures and restrictions may result in personal injury.
3. For proper performance and personal safety ensure the proper size Double Side Tie has been selected before installation.