

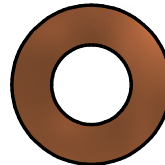
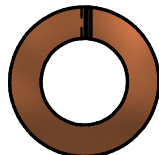
DOSSERT®

TYPE EN, EW, ELW, EILW Everdur Nuts, Spring Washer, and Flat Washer

Dossert Everdur nuts, EN, are made to the American Standard National course thread Class 2 Semifinished, cold punched. Dossert Everdur spring type lockwasher, ELW, is a tough and durable unit which prevents the loosening of the nut under severe conditions of vibration. Dossert Everdur flat washers, EW, are stamped from cold drawn Everdur sheet and are tumbled to a smooth finish with rounded edges. Dossert Everdur internal lock washer EILW.

Material

Everdur

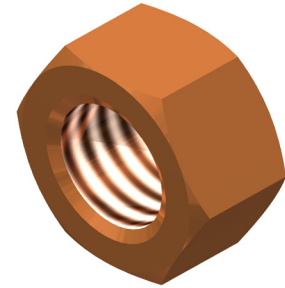


EN

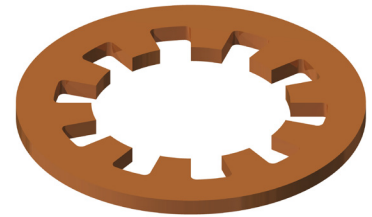
EILW

ELW

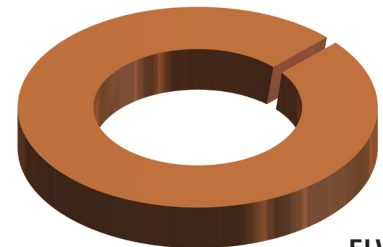
EW



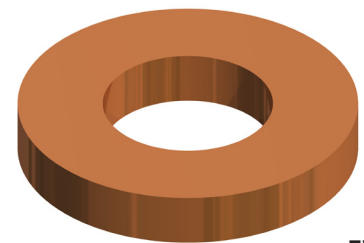
EN



EILW



ELW



EW

Ordering Information

| TYPE EN | | | | |
|----------------|---------------------|------------------|--------------------|-----------|
| CATALOG NUMBER | DIAMETER OF THREADS | THREADS PER INCH | WIDTH ACROSS FLATS | THICKNESS |
| EN25 | 1/2 | 20 | 7/6 | 13/64 |
| EN31 | 5/16 | 18 | 9/16 | 1/4 |
| EN37 | 3/8 | 16 | 5/8 | 5/16 |
| EN50 | 1/2 | 13 | 13/16 | 27/64 |
| EN62 | 5/8 | 11 | 1 | 17/32 |
| EILW75 | 3/4 | .102 | 1 7/8 | |

| TYPE EILW | | | |
|----------------|-----------|-----------|----------------|
| CATALOG NUMBER | BOLT SIZE | THICKNESS | MAJOR DIAMETER |
| EILW25 | 1/4 | .040 | 11/16 |
| EILW31 | 5/16 | .064 | 7/8 |
| EILW37 | 3/8 | .064 | 1 |
| EILW50 | 1/2 | .091 | 1 1/4 |
| EILW62 | 5/8 | .091 | 1 1/2 |
| EILW75 | 3/4 | .102 | 1 7/8 |

| TYPE ELW | | TYPE EW | | |
|----------------|-----------|----------------|-----------|-----------|
| CATALOG NUMBER | BOLT SIZE | CATALOG NUMBER | BOLT SIZE | THICKNESS |
| ELW25 | 1/4 | EW25 | 1/4 | 1/16 |
| ELW31 | 5/16 | EW31 | 5/16 | 1/16 |
| ELW37 | 3/8 | EW37 | 3/8 | 3/32 |
| ELW50 | 1/2 | EW50 | 1/2 | 1/8 |
| ELW62 | 5/8 | EW62 | 5/8 | 5/32 |
| ELW75 | 3/4 | EW75 | 3/4 | 3/16 |