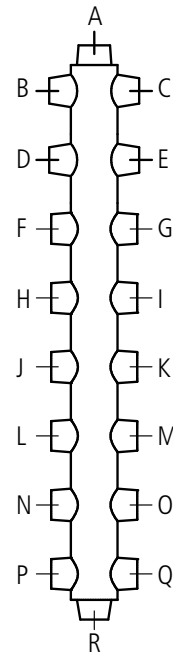
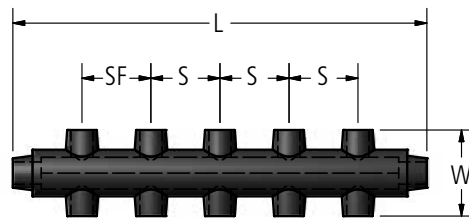


### DOSSERT® MICON Type MCD

A multi-outlet pre-insulated connector for secondary network cables. Cables are readily installed and are securely connected to each outlet position by the use of cable receptacles type MA. Outlet sizes on listed connectors will accommodate cable sizes at 600 MCM. For connectors required to join larger than 600 MCM cables, indicate catalog number of selected unit and refer to MICON ORDERING DATA sheet. Unless otherwise specified, connectors are insulated with GA-20 rubber compound. Type P plugs of the same material are supplied for one quarter of the number of outlets.



### Ordering Information

CATALOG NUMBER	CURRENT RATING AMPERES	NUMBER OF OUTLETS	DIMENSIONS IN INCHES			
			L	SF	S	W
MCD150-4	1500	4	6 1/8	-	-	4 1/16
MCD150-6	1500	6	9 1/8	3	-	4 1/16
MCD150-8	1500	8	12 1/8	3	3	4 1/16
MCD150-10	1500	10	15 1/8	3	3	4 1/16
MCD150-12	1500	12	18 1/8	3	3	4 1/16
MCD150-14	1500	14	21 1/8	3	3	4 1/16
MCD150-16	1500	16	24 1/8	3	3	4 1/16
MCD150-18	1500	18	27 1/8	3	3	4 1/16
MCD250-4	2500	4	7	-	-	4 3/8
MCD250-6	2500	6	10 1/2	3 1/2	-	4 3/8
MCD250-8	2500	8	14	3 1/2	3 1/2	4 3/8
MCD250-10	2500	10	17 1/2	3 1/2	3 1/2	4 3/8
MCD250-12	2500	12	21	3 1/2	3 1/2	4 3/8
MCD250-14	2500	14	24 1/2	3 1/2	3 1/2	4 3/8
MCD250-16	2500	16	28	3 1/2	3 1/2	4 3/8
MCD250-18	2500	18	31 1/2	3 1/2	3 1/2	4 3/8
MCD300-4	3000	4	7	-	-	5
MCD300-6	3000	6	10 5/8	3 5/8	-	5
MCD300-8	3000	8	14	3 5/8	3 3/8	5
MCD300-10	3000	10	17 3/8	3 5/8	3 3/8	5
MCD300-12	3000	12	20 3/4	3 5/8	3 3/8	5
MCD300-14	3000	14	24 1/8	3 5/8	3 3/8	5
MCD300-16	3000	16	27 1/2	3 5/8	3 3/8	5
MCD300-18	3000	18	30 7/8	3 5/8	3 3/8	5