

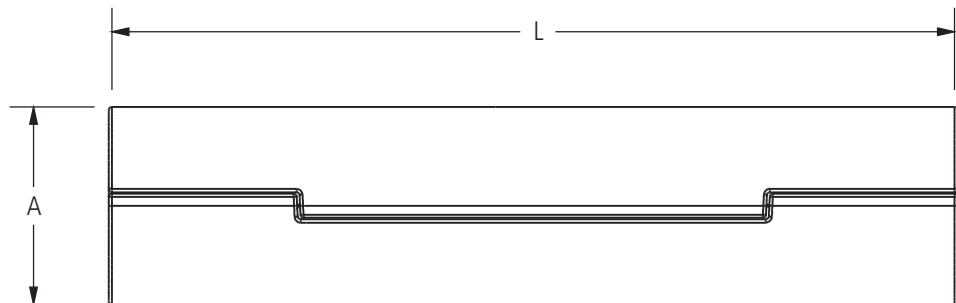
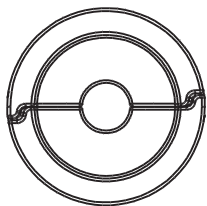
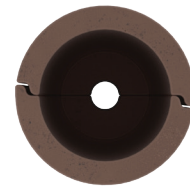
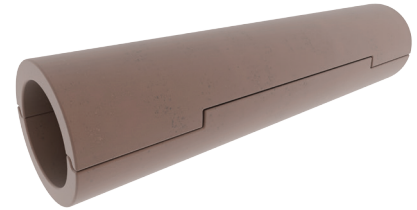
DOSSERT®

Types NRLA-R2, NRLA-P2 Limiter Shell for Use with Limiter Link Types NRLA-R3, NRLA-P3, and NRLA-PL3

An arc proof shell of molded composition provided with a system of cavities and heat confining barriers. The shell assembly permits fusible section of limiter to melt and clear line without causing damage to surrounding insulation by restraining and confining the arc and insulating the resulting heat.

Material

Asbestite Cement, Varnish Coated



Ordering Information

CATALOG NUMBER		CABLE RANGE	DIMENSIONS IN INCHES	
FOR RUBBER INSULATED CABLE	FOR PAPER* INSULATED CABLE		A	L
NRLA25-R2	NRLA25-P2	4/0 STR-250 MCM	1 1/2	6 13/16
NRLA40-R2	NRLA40-P2	300 MCM - 400 MCM	1 3/4	7 9/16
NRLA50-R2	NRLA50-P2	500 MCM	1 7/8	9 7/16
NRLA75-R2	NRLA75-P2	750 MCM	2 1/8	8 7/8

* For use with regular or long limiter link types NRLA-P3 and NRLA-PL3.