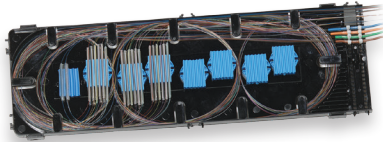


Opti-Guard Splice Tray



Opti-Guard Splice Tray

The Opti-Guard Splice Tray is specifically designed to be used with the Opti-Guard Splice Enclosure.

Features

- 72 fiber splice capacity
- Manifolds are easily removed for lower fiber counts
- Clear cover for easy fiber identification

Ordering Information

MODEL	AFL NO.
Opti-Guard Splice Tray	OGST01-72
60 mm Splice Protection Sleeve	SPS60
40 mm Splice Protection Sleeve	SPS40

Opti-Guard Bullet Guard



Opti-Guard Bullet Guard

The Opti-Guard Bullet Guard is designed to supplement the ballistic resistance of the Opti-Guard Splice Enclosure.

Features

- Can be retrofitted onto existing installations without disturbing cables
- Only a standard flat-blade screwdriver required for installation

Ordering Information

MODEL	AFL NO.
Opti-Guard Bullet Guard	OGBGS-01

Opti-Guard Fiber Routing Kit



Opti-Guard Fiber Routing Kit

The Opti-Guard Fiber Routing Kit provides all of the materials to properly route fibers from a stainless steel tube to the OGST01-72 splice tray inside the Opti-Guard splice enclosure.

Features

- Primary transition tubing leads fiber from stainless steel tube to splice tray
- Heat Shrink tubing guides fibers as they exit the stainless steel tube
- Cable ties provided to secure tubing to the tray and the end of the stainless steel tube

Ordering Information

MODEL	AFL NO.
Opti-Guard Fiber Routing Kit	OGFK01

NOTE: Order one kit for each stainless steel tube.