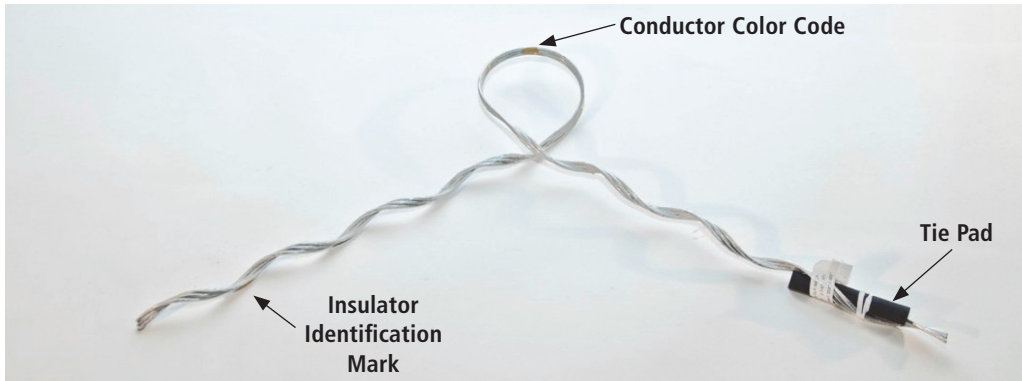


### Side Tie with Pad

**NOTE: READ AND UNDERSTAND INSTALLATION INSTRUCTIONS BEFORE INSTALL. ENSURE YOU HAVE THE CORRECT HELIFORMED PRODUCT BEFORE INSTALL IS STARTED.**

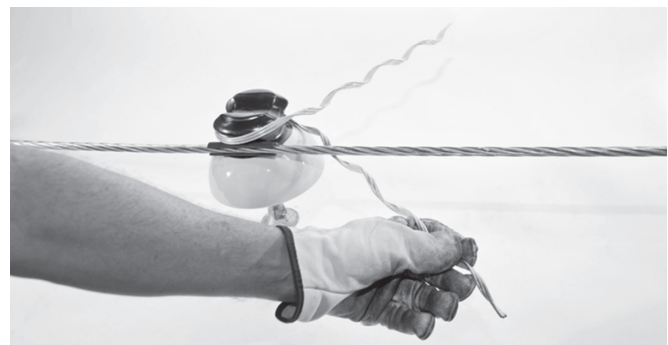


#### Cold Application

1. Apply the Tie Pads to the conductor so the conductor does not come into direct contact with the insulators. Keep the tie pad slit facing upward.
3. Install the Side Tie over the pad by squeezing the two Tie legs. The loop will enlarge enabling enough space to slide over the head of the insulator.



2. Ensure the Tie Pad is protecting the conductor from coming in direct contact with the insulator.
4. Position the Side Tie around the neck of the insulator. Be sure the conductor is between the two legs of the Side Tie.



*continued >*

### Side Tie with Pad

5. Pull the two legs opposite ways ensuring a tight connection around the insulator and start to wrap the Tie onto the conductor. (Note: On smaller size conductors, the leg of the Side Tie must be tucked under the corner of the Tie Pad. On larger size conductors, it is optional whether the Tie wraps under or over the Tie Pad.)



6. Finish fully wrapping both legs around the conductor. Ensure the Side Tie end fully snaps into place. This may require more pressure than the pressure to wrap.



### Safety

1. Side Ties are precision devices. They should be stored in covered cartons and handled carefully.
2. This application procedure is NOT intended to supersede any company construction or safety standards. This procedure is offered only to illustrate safe application for the individual. Failure to follow these procedures and restrictions may result in personal injury.
3. For proper performance and personal safety ensure the proper size Side Tie has been selected before installation.