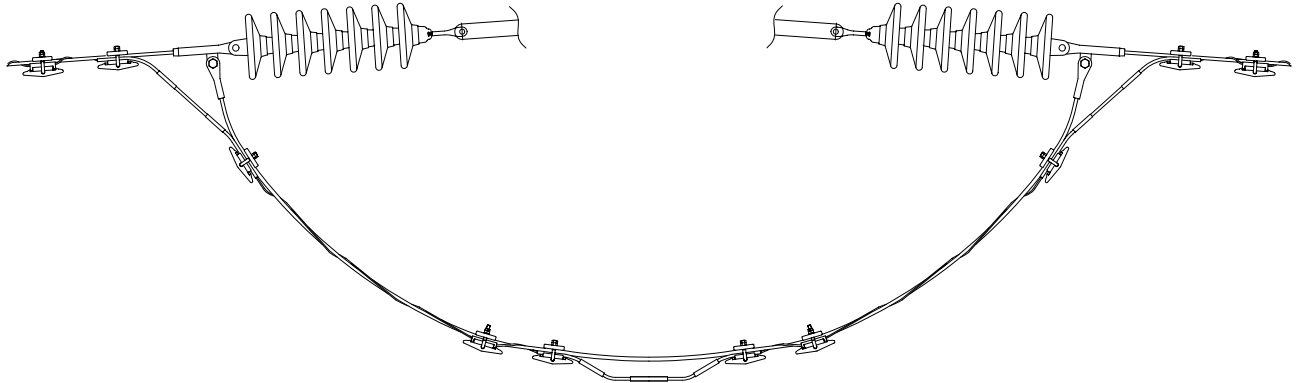


SkyWrap® Tension Bypass—Phase Wire

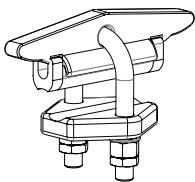


SkyWrap cable is passed around the tower conductor tension fittings using a combination of specially designed bypass accessories known as 'balehangers'. The SkyWrap cable is clamped to the conductor and passed around the tension fittings using balehangers to keep the SkyWrap cable away from the conductor fittings.

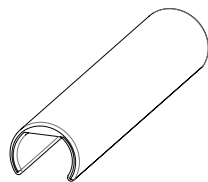
Features

- Shaped aluminum provides secure passage of the SkyWrap cable around the conductor fittings
- Aluminum balehangers are held at the same electric potential as the conductor
- Balehangers can be applied to any conductor tension arrangement and design
- Meets IEEE standard 1591.3-2011

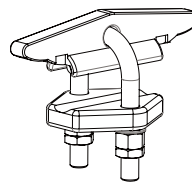
Key components



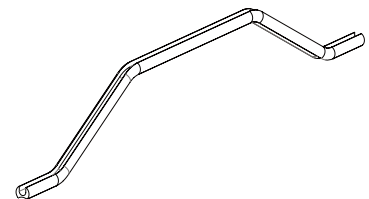
Cable clamp with nylon insert



Cable balehanger cover



Cable clamp



Aluminum Balehanger

Ordering Information

	STRUCTURE TYPE	CONDUCTOR SIZE INCHES (MM)		
		0.354-0.866 (9-22)	0.787-1.221 (20-31)	1.181-1.693 (30-43)
TCD	927	A	B	C

Example: TCD-927B