

SkyWrap® Termination Joint—Ground Wire

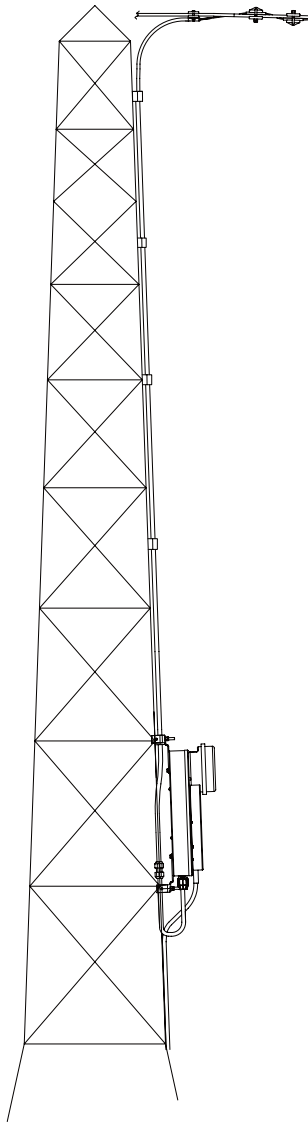
Cable is passed down the tower to a cable joint enclosure in a protective conduit to provide a link between the SkyWrap cable and the onward fiber optic cable connection, including options for OPGW, ADSS or underground fiber optic cables.

The joint enclosure is mounted on lattice towers, wood, steel or concrete poles for easy access to the fiber.

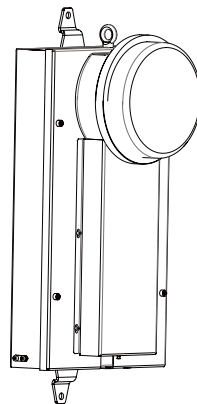
Features

- All tower fittings are available for a range of tower or pole designs
- Enclosures boxes are 830 x 380 x 260 mm
- Convenient cable storage and easy access to joint
- Robust weather proof design
- Available for up to 192 fibers
- Joint enclosure can be locked for added security
- Made to BS EN 50411-3-2002 standard
- Meets IEEE standard 1591.3-2011

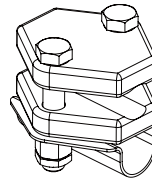
Key components



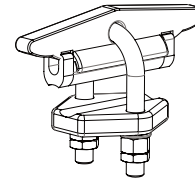
Typical configuration for a lattice tower



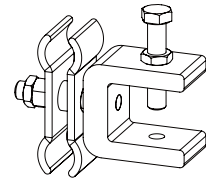
Tower mounted joint enclosure



Ground to ground clamp



Cable clamp with nylon insert



Conduit clamp

Ordering Information

	TOWER HEIGHT FEET (M)			STRUCTURE TYPE			CONDUCTOR SIZE INCHES (MM)			FIBER COUNT
	< 82 (< 25)	< 115 (< 35)	< 197 (< 60)	Lattice Tower	Steel/Concrete Pole	Wood Pole	0.354-0.866 (9-22)	0.787-1.221 (20-31)	1.181-1.693 (30-43)	
TCD	L	M	H	902	906	962	A	B	C	nnF

Example: TCD-L906B48F