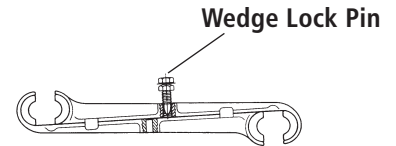


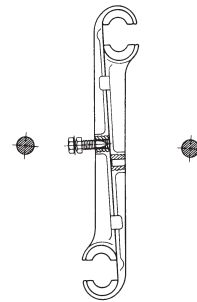
Installation Instructions

Speed-Grip® Spacers

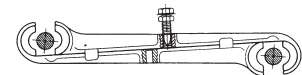
1. Prior to installation, slide open the spacer assembly giving a clamp opening of approximately 1½ times the conductor diameter. Finger-tighten the wedge-lock pin enough to hold the spacer assembly in the open position.



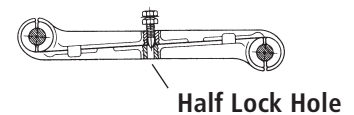
2. Position spacer assembly between the two conductors, so that it is perpendicular to the conductors.



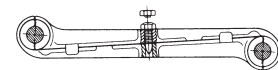
3. Rotate the spacer assembly until the conductors rest in the open clamps.



4. Loosen the wedge-lock pin and slide the spacer assembly closed. Finger-tighten the wedge-lock pin to engage the pin with lower spacer half lock hole.



5. Using a 12" (30 cm) ratchet wrench with a 6-point deep socket, tighten the wedge-lock pin until breakaway head shears off.



6. Make final visual inspection to ensure that the spacer is properly seated on the conductor, shear head is missing and the wedge-lock pin head is free of burrs.