

TYPE SWPS-AA Swage Horizontal Bus Support

A Swage type horizontal bus support.

Material

Aluminum Alloy

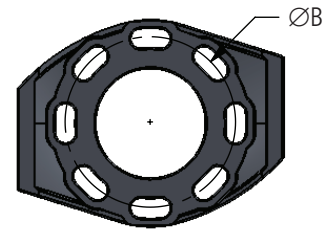
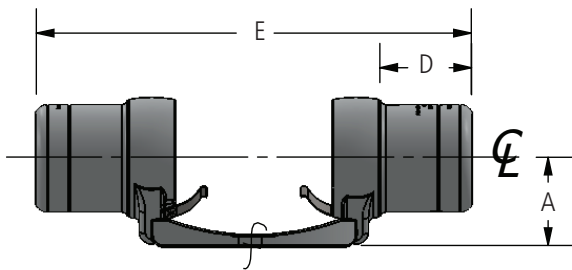
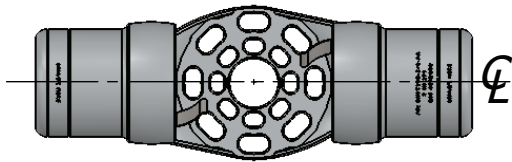
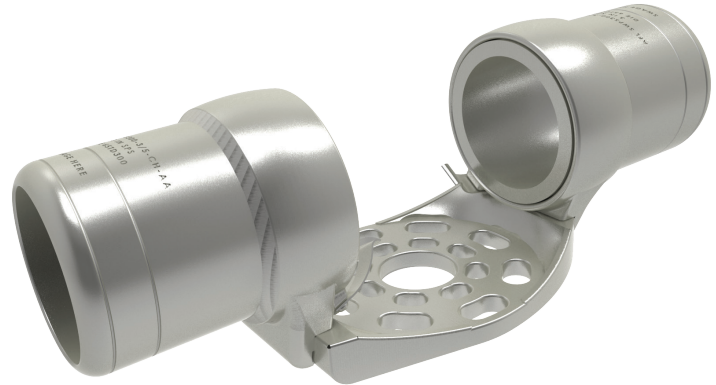
Mounting Hardware

Galvanized steel bolts and lockwashers

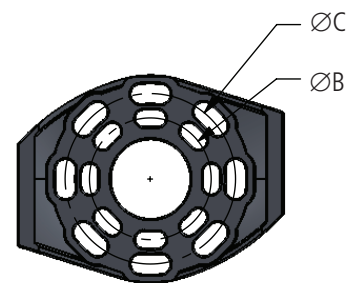
Notes

- Bore will be lined with AFL Filler compound (AFC) and capped.
- See General Information Section for this dimension.
- 5" and 6" S.P.S. parts require double swages

f—Machine Finish



BOLT CIRCLE A



BOLT CIRCLE B

continued
→

TYPE SWPS-AA Swage Horizontal Bus Support

Ordering Information

AFL NO.	S.P.S.	BOLT CIRCLE	DIMENSIONS IN INCHES					DIE SIZE	VOLTAGE RATING (kV)
			A	B	C	D	E		
SWPS200-3-CH-AA	2	A	2.75	3.00	-	3.75	15.63	65TD200	230
SWPS200-3/5-CH-AA	2	B	2.75	3.00	5.00	3.75	16.88	65TD200	230
SWPS200-5-CH-AA	2	A	2.75	5.00	-	3.75	16.88	65TD200	230
SWPS200-5/7-CH-AA	2	B	2.75	5.00	7.00	3.75	19.38	65TD200	230
SWPS200-7-CH-AA	2	A	2.75	7.00	-	3.75	19.38	65TD200	230
SWPS250-3-CH-AA	2.5	A	3.16	3.00	-	4.00	16.13	65TD250	230
SWPS250-3/5-CH-AA	2.5	B	3.16	3.00	5.00	4.00	17.38	65TD250	230
SWPS250-5-CH-AA	2.5	A	3.16	5.00	-	4.00	17.38	65TD250	230
SWPS250-5/7-CH-AA	2.5	B	3.16	5.00	7.00	4.00	19.88	65TD250	230
SWPS250-7-CH-AA	2.5	A	3.16	7.00	-	4.00	19.88	65TD250	230
SWPS300-3-CH-AA	3	A	3.63	3.00	-	3.75	16.63	65TD300	500
SWPS300-3/5-CH-AA	3	B	3.63	3.00	5.00	3.75	17.88	65TD300	500
SWPS300-5-CH-AA	3	A	3.63	5.00	-	3.75	17.88	65TD300	500
SWPS300-5/7-CH-AA	3	B	3.63	5.00	7.00	3.75	20.38	65TD300	500
SWPS300-7-CH-AA	3	A	3.63	7.00	-	3.75	20.38	65TD300	500
SWPS350-3-CH-AA	3.5	A	4.00	3.00	-	4.00	17.13	65TD350	500
SWPS350-3/5-CH-AA	3.5	B	4.00	3.00	5.00	4.00	18.38	65TD350	500
SWPS350-5-CH-AA	3.5	A	4.00	5.00	-	4.00	18.38	65TD350	500
SWPS350-5/7-CH-AA	3.5	B	4.00	5.00	7.00	4.00	20.88	65TD350	500
SWPS350-7-CH-AA	3.5	A	4.00	7.00	-	4.00	20.88	65TD350	500
SWPS400-3-CH-AA	4	A	4.50	3.00	-	4.50	18.13	65TD400	500
SWPS400-3/5-CH-AA	4	B	4.50	3.00	5.00	4.50	19.38	65TD400	500
SWPS400-5-CH-AA	4	A	4.50	5.00	-	4.50	19.38	65TD400	500
SWPS400-5/7-CH-AA	4	B	4.50	5.00	7.00	4.50	21.88	65TD400	500
SWPS400-7-CH-AA	4	A	4.50	7.00	-	4.50	21.88	65TD400	500
SWPS500-3/5-CH-AA	5	B	5.00	3.00	5.00	5.38	21.14	85TD500	500
SWPS500-5-CH-AA	5	A	5.00	5.00	-	5.38	21.14	85TD500	500
SWPS500-5/7-CH-AA	5	B	5.00	5.00	7.00	5.38	23.64	85TD500	500
SWPS500-7-CH-AA	5	A	5.00	7.00	-	5.38	23.64	85TD500	500
SWPS600-3/5-CH-AA	6	B	5.50	3.00	5.00	6.62	23.62	115TD600	500
SWPS600-5-CH-AA	6	A	5.50	5.00	-	6.62	23.62	115TD600	500
SWPS600-5/7-CH-AA	6	B	5.50	5.00	7.00	6.62	26.12	115TD600	500
SWPS600-7-CH-AA	6	A	5.50	7.00	-	6.62	26.12	115TD600	500