

## TYPE SWCTA-AA Swage Cable Angled Terminal

A swage type cable angled terminal on a nema pad.

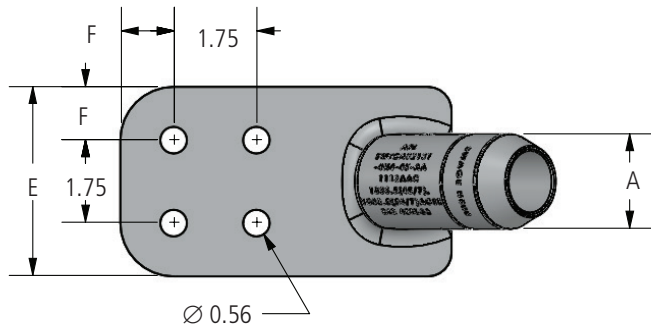
### Material

Aluminum Alloy

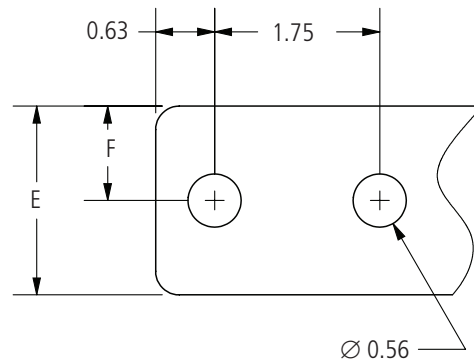
### Notes

- Prefilled with AFL Filler Compound (AFC) and capped.
- For Electro Tin plate add "-SN" to AFL No.  
EX: SWCTA2026-4N-45-AA-SN

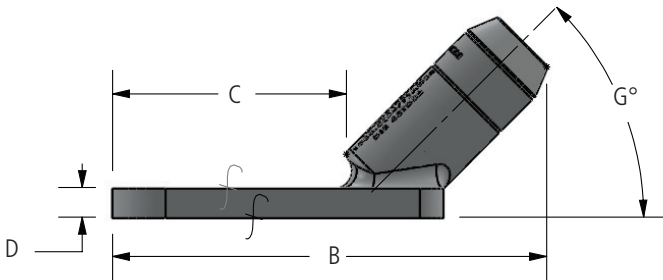
*f*—Machine Finish



Pad Detail 2



Pad Detail 1



### Ordering Information

AFL NO.	CABLE SIZE		PAD DETAIL	DIMENSIONS IN INCHES							DIE SIZE	VOLTAGE RATING (KV)
	AAC	ACSR		A	B	C	D	E	F	G		
SWCTA1613-2N-15-AA	2/0	1/0 (6/1)	1	1.00	7.20	3.84	0.38	2.00	1.00	15.0	45TD16	230
SWCTA1613-2N-45-AA			1	1.00	6.84	3.94	0.38	2.00	1.00	45.0	45TD16	230
SWCTA1613-4N-15-AA			2	1.00	7.20	3.84	0.38	3.00	0.63	15.0	45TD16	230
SWCTA1613-4N-45-AA			2	1.00	6.84	3.94	0.38	3.00	0.63	45.0	45TD16	230
SWCTA1613-4N4-15-AA			2	1.00	8.20	4.84	0.38	4.00	1.13	15.0	45TD16	230
SWCTA1613-4N4-45-AA			2	1.00	7.84	4.94	0.38	4.00	1.13	45.0	45TD16	230

continued  
→



**TYPE SWCTA-AA**  
Swage Cable Angled Terminal

**Ordering Information**

SWAGE360® Cable Accessories

AFL NO.	CABLE SIZE		PAD DETAIL	DIMENSIONS IN INCHES							DIE SIZE	VOLTAGE RATING (KV)
	AAC	ACSR		A	B	C	D	E	F	G		
SWCTA1617-2N-15-AA	3/0	2/0 (6/1)	1	1.00	7.20	3.84	0.38	2.00	1.00	15.0	45TD16	230
SWCTA1617-2N-45-AA			1	1.00	6.84	3.94	0.38	2.00	1.00	45.0	45TD16	230
SWCTA1617-4N-15-AA			2	1.00	7.20	3.84	0.38	3.00	0.63	15.0	45TD16	230
SWCTA1617-4N-45-AA			2	1.00	6.84	3.94	0.38	3.00	0.63	45.0	45TD16	230
SWCTA1617-4N4-15-AA			2	1.00	8.20	4.84	0.38	4.00	1.13	15.0	45TD16	230
SWCTA1617-4N4-45-AA			2	1.00	7.84	4.94	0.38	4.00	1.13	45.0	45TD16	230
SWCTA1621-2N-15-AA	4/0	3/0 (6/1)	1	1.00	7.20	3.84	0.38	2.00	1.00	15.0	45TD16	230
SWCTA1621-2N-45-AA			1	1.00	6.84	3.94	0.38	2.00	1.00	45.0	45TD16	230
SWCTA1621-4N-15-AA			2	1.00	7.20	3.84	0.38	3.00	0.63	15.0	45TD16	230
SWCTA1621-4N-45-AA			2	1.00	6.84	3.94	0.38	3.00	0.63	45.0	45TD16	230
SWCTA1621-4N4-15-AA			2	1.00	8.20	4.84	0.38	4.00	1.13	15.0	45TD16	230
SWCTA1621-4N4-45-AA			2	1.00	7.84	4.94	0.38	4.00	1.13	45.0	45TD16	230
SWCTA1625-2N-15-AA	250	4/0 (6/1)	1	1.00	7.20	3.84	0.38	2.00	1.00	15.0	45TD16	230
SWCTA1625-2N-45-AA			1	1.00	6.84	3.94	0.38	2.00	1.00	45.0	45TD16	230
SWCTA1625-4N-15-AA			2	1.00	7.20	3.84	0.38	3.00	0.63	15.0	45TD16	230
SWCTA1625-4N-45-AA			2	1.00	6.84	3.94	0.38	3.00	0.63	45.0	45TD16	230
SWCTA1625-4N4-15-AA			2	1.00	8.20	4.84	0.38	4.00	1.13	15.0	45TD16	230
SWCTA1625-4N4-45-AA			2	1.00	7.84	4.94	0.38	4.00	1.13	45.0	45TD16	230
SWCTA2026-2N-15-AA	266.8	266.8 (18/1)	1	1.25	7.67	3.78	0.63	2.00	1.00	15.0	45TD20	230
SWCTA2026-2N-45-AA			1	1.25	7.08	3.67	0.63	2.00	1.00	45.0	45TD20	230
SWCTA2026-4N-15-AA			2	1.25	7.67	3.78	0.63	3.00	0.63	15.0	45TD20	345
SWCTA2026-4N-45-AA			2	1.25	7.08	3.67	0.63	3.00	0.63	45.0	45TD20	345
SWCTA2026-4N4-15-AA			2	1.25	8.67	4.78	0.63	4.00	1.13	15.0	45TD20	345
SWCTA2026-4N4-45-AA			2	1.25	8.08	4.67	0.63	4.00	1.13	45.0	45TD20	345
SWCTA2030-2N-15-AA	300	266.8 (26/7)	1	1.25	7.67	3.78	0.63	2.00	1.00	15.0	45TD20	230
SWCTA2030-2N-45-AA			1	1.25	7.08	3.67	0.63	2.00	1.00	45.0	45TD20	230
SWCTA2030-4N-15-AA			2	1.25	7.67	3.78	0.63	3.00	0.63	15.0	45TD20	345
SWCTA2030-4N-45-AA			2	1.25	7.08	3.67	0.63	3.00	0.63	45.0	45TD20	345
SWCTA2030-4N4-15-AA			2	1.25	8.67	4.78	0.63	4.00	1.13	15.0	45TD20	345
SWCTA2030-4N4-45-AA			2	1.25	8.08	4.67	0.63	4.00	1.13	45.0	45TD20	345
SWCTA2035-2N-15-AA	336.4, 350	300 (26/7), 336.4 (18/1)	1	1.25	7.67	3.78	0.63	2.00	1.00	15.0	45TD20	230
SWCTA2035-2N-45-AA			1	1.25	7.08	3.67	0.63	2.00	1.00	45.0	45TD20	230
SWCTA2035-4N-15-AA			2	1.25	7.67	3.78	0.63	3.00	0.63	15.0	45TD20	345
SWCTA2035-4N-45-AA			2	1.25	7.08	3.67	0.63	3.00	0.63	45.0	45TD20	345
SWCTA2035-4N4-15-AA			2	1.25	8.67	4.78	0.63	4.00	1.13	15.0	45TD20	345
SWCTA2035-4N4-45-AA			2	1.25	8.08	4.67	0.63	4.00	1.13	45.0	45TD20	345

continued  
→



**TYPE SWCTA-AA**  
Swage Cable Angled Terminal

**Ordering Information**

AFL NO.	CABLE SIZE		PAD DETAIL	DIMENSIONS IN INCHES							DIE SIZE	VOLTAGE RATING (KV)
	AAC	ACSR		A	B	C	D	E	F	G		
SWCTA2039-2N-15-AA	397.5	336.4 (26/7), 336.4 (30/7), 397.5 (18/1)	1	1.25	7.67	3.78	0.63	2.00	1.00	15.0	45TD20	230
SWCTA2039-2N-45-AA			1	1.25	7.08	3.67	0.63	2.00	1.00	45.0	45TD20	230
SWCTA2039-4N-15-AA			2	1.25	7.67	3.78	0.63	3.00	0.63	15.0	45TD20	345
SWCTA2039-4N-45-AA			2	1.25	7.08	3.67	0.63	3.00	0.63	45.0	45TD20	345
SWCTA2039-4N4-15-AA			2	1.25	8.67	4.78	0.63	4.00	1.13	15.0	45TD20	345
SWCTA2039-4N4-45-AA			2	1.25	8.08	4.67	0.63	4.00	1.13	45.0	45TD20	345
SWCTA2445-2N-15-AA	450	397.5 (24/7), 397.5 (26/7)	1	1.50	8.40	4.21	0.63	2.00	1.00	15.0	45TD24	230
SWCTA2445-2N-30-AA			1	1.50	8.10	4.00	0.63	2.00	1.00	30.0	45TD24	230
SWCTA2445-2N-45-AA			1	1.50	7.64	3.91	0.63	2.00	1.00	45.0	45TD24	230
SWCTA2445-4N-15-AA			2	1.50	8.40	4.21	0.63	3.00	0.63	15.0	45TD24	345
SWCTA2445-4N-45-AA			2	1.50	7.64	3.91	0.63	3.00	0.63	45.0	45TD24	345
SWCTA2445-4N4-15-AA			2	1.50	9.40	5.21	0.63	4.00	1.13	15.0	45TD24	345
SWCTA2445-4N4-45-AA	2	1.50	8.64	4.91	0.63	4.00	1.13	45.0	45TD24	345		
SWCTA2447-2N-15-AA	477	397.5 (30/7)	1	1.50	8.40	4.21	0.63	2.00	1.00	15.0	45TD24	230
SWCTA2447-2N-45-AA			1	1.50	7.64	3.91	0.63	2.00	1.00	45.0	45TD24	230
SWCTA2447-4N-15-AA			2	1.50	8.40	4.21	0.63	3.00	0.63	15.0	45TD24	345
SWCTA2447-4N-45-AA			2	1.50	7.64	3.91	0.63	3.00	0.63	45.0	45TD24	345
SWCTA2447-4N4-15-AA			2	1.50	9.40	5.21	0.63	4.00	1.13	15.0	45TD24	345
SWCTA2447-4N4-45-AA			2	1.50	8.64	4.91	0.63	4.00	1.13	45.0	45TD24	345
SWCTA2450-2N-15-AA	500	477 (18/1)	1	1.50	8.40	4.21	0.63	2.00	1.00	15.0	45TD24	230
SWCTA2450-2N-45-AA			1	1.50	7.64	3.91	0.63	2.00	1.00	45.0	45TD24	230
SWCTA2450-4N-15-AA			2	1.50	8.40	4.21	0.63	3.00	0.63	15.0	45TD24	345
SWCTA2450-4N-45-AA			2	1.50	7.64	3.91	0.63	3.00	0.63	45.0	45TD24	345
SWCTA2450-4N4-15-AA			2	1.50	9.40	5.21	0.63	4.00	1.13	15.0	45TD24	345
SWCTA2450-4N4-45-AA			2	1.50	8.64	4.91	0.63	4.00	1.13	45.0	45TD24	345
SWCTA2455-2N-15-AA	556.5	477 (24/7), 477 (26/7)	1	1.50	8.40	4.21	0.63	2.00	1.00	15.0	45TD24	230
SWCTA2455-2N-45-AA			1	1.50	7.64	3.91	0.63	2.00	1.00	45.0	45TD24	230
SWCTA2455-4N-15-AA			2	1.50	8.40	4.21	0.63	3.00	0.63	15.0	45TD24	345
SWCTA2455-4N-45-AA			2	1.50	7.64	3.91	0.63	3.00	0.63	45.0	45TD24	345
SWCTA2455-4N4-15-AA			2	1.50	9.40	5.21	0.63	4.00	1.13	15.0	45TD24	345
SWCTA2455-4N4-45-AA			2	1.50	8.64	4.91	0.63	4.00	1.13	45.0	45TD24	345
SWCTA2860-2N-15-AA	600	477 (30/7), 556.5 (18/1)	1	1.75	8.91	4.42	0.63	2.00	1.00	15.0	45TD28	230
SWCTA2860-2N-45-AA			1	1.75	8.19	4.14	0.63	2.00	1.00	45.0	45TD28	230
SWCTA2860-4N-15-AA			2	1.75	8.91	4.42	0.63	3.00	0.63	15.0	45TD28	345
SWCTA2860-4N-45-AA			2	1.75	8.19	4.14	0.63	3.00	0.63	45.0	45TD28	345
SWCTA2860-4N4-15-AA			2	1.75	9.41	4.92	0.63	4.00	1.13	15.0	45TD28	345
SWCTA2860-4N4-45-AA			2	1.75	8.69	4.64	0.63	4.00	1.13	45.0	45TD28	345

SWAGE360® Cable Accessories

continued  
→



**TYPE SWCTA-AA**  
Swage Cable Angled Terminal

**Ordering Information**

AFL NO.	CABLE SIZE		PAD DETAIL	DIMENSIONS IN INCHES							DIE SIZE	VOLTAGE RATING (KV)
	AAC	ACSR		A	B	C	D	E	F	G		
SWCTA2863-2N-15-AA	636	556.5 (24/7), 556.5 (26/7)	1	1.75	8.91	4.42	0.63	2.00	1.00	15.0	45TD28	230
SWCTA2863-2N-45-AA			1	1.75	8.19	4.14	0.63	2.00	1.00	45.0	45TD28	230
SWCTA2863-4N-15-AA			2	1.75	8.91	4.42	0.63	3.00	0.63	15.0	45TD28	345
SWCTA2863-4N-45-AA			2	1.75	8.19	4.14	0.63	3.00	0.63	45.0	45TD28	345
SWCTA2863-4N4-15-AA			2	1.75	9.41	4.92	0.63	4.00	1.13	15.0	45TD28	345
SWCTA2863-4N4-45-AA			2	1.75	8.69	4.64	0.63	4.00	1.13	45.0	45TD28	345
SWCTA2871-2N-15-AA	700, 715.5	556.5 (30/7), 605 (24/7), 605 (26/7), 636 (18/1), 636 (36/1)	1	1.75	8.91	4.42	0.63	2.00	1.00	15.0	45TD28	230
SWCTA2871-2N-45-AA			1	1.75	8.19	4.14	0.63	2.00	1.00	45.0	45TD28	230
SWCTA2871-4N-15-AA			2	1.75	8.91	4.42	0.63	3.00	0.63	15.0	45TD28	345
SWCTA2871-4N-45-AA			2	1.75	8.19	4.14	0.63	3.00	0.63	45.0	45TD28	345
SWCTA2871-4N4-15-AA			2	1.75	9.41	4.92	0.63	4.00	1.13	15.0	45TD28	345
SWCTA2871-4N4-45-AA			2	1.75	8.69	4.64	0.63	4.00	1.13	45.0	45TD28	345
SWCTA3075-2N-15-AA	750	605 (30/7), 605 (30/19), 636 (24/7), 636 (26/7)	1	1.88	8.91	4.39	0.63	2.00	1.00	15.0	45TD30	230
SWCTA3075-2N-45-AA			1	1.88	8.15	4.01	0.63	2.00	1.00	45.0	45TD30	230
SWCTA3075-4N-15-AA			2	1.88	8.91	4.39	0.63	3.00	0.63	15.0	45TD30	345
SWCTA3075-4N-45-AA			2	1.88	8.15	4.01	0.63	3.00	0.63	45.0	45TD30	345
SWCTA3075-4N4-15-AA			2	1.88	9.41	4.89	0.63	4.00	1.13	15.0	45TD30	345
SWCTA3075-4N4-45-AA			2	1.88	8.65	4.51	0.63	4.00	1.13	45.0	45TD30	345
SWCTA3079-2N-15-AA	795	636 (30/7), 636 (30/19), 715.5 (24/7), 715.5 (54/7), 795 (36/1)	1	1.88	8.91	4.39	0.63	2.00	1.00	15.0	45TD30	230
SWCTA3079-2N-45-AA			1	1.88	8.15	4.01	0.63	2.00	1.00	45.0	45TD30	230
SWCTA3079-4N-15-AA			2	1.88	8.91	4.39	0.63	3.00	0.63	15.0	45TD30	345
SWCTA3079-4N-30-AA			2	1.88	8.61	4.12	0.63	3.00	0.63	30.0	45TD30	345
SWCTA3079-4N-45-AA			2	1.88	8.15	4.01	0.63	3.00	0.63	45.0	45TD30	345
SWCTA3079-4N4-15-AA			2	1.88	9.41	4.89	0.63	4.00	1.13	15.0	45TD30	345
SWCTA3079-4N4-45-AA	2	1.88	8.65	4.51	0.63	4.00	1.13	45.0	45TD30	345		
SWCTA3087-2N-15-AA	874.5	715.5 (26/7), 715.5 (30/19), 795 (45/7)	1	1.88	8.91	4.39	0.63	2.00	1.00	15.0	45TD30	230
SWCTA3087-2N-45-AA			1	1.88	8.15	4.01	0.63	2.00	1.00	45.0	45TD30	230
SWCTA3087-4N-15-AA			2	1.88	8.91	4.39	0.63	3.00	0.63	15.0	45TD30	345
SWCTA3087-4N-45-AA			2	1.88	8.15	4.01	0.63	3.00	0.63	45.0	45TD30	345
SWCTA3087-4N4-15-AA			2	1.88	9.41	4.89	0.63	4.00	1.13	15.0	45TD30	345
SWCTA3087-4N4-45-AA			2	1.88	8.65	4.51	0.63	4.00	1.13	45.0	45TD30	345
SWCTA3290-2N-15-AA	900	795 (24/7), 795 (54/7), 795 (26/7)	1	2.00	9.03	4.36	0.75	2.00	1.00	15.0	45TD32	230
SWCTA3290-2N-45-AA			1	2.00	8.19	3.88	0.75	2.00	1.00	45.0	45TD32	230
SWCTA3290-4N-15-AA			2	2.00	9.03	4.36	0.75	3.00	0.63	15.0	45TD32	345
SWCTA3290-4N-45-AA			2	2.00	8.19	3.88	0.75	3.00	0.63	45.0	45TD32	345
SWCTA3290-4N4-15-AA			2	2.00	10.03	5.36	0.75	4.00	1.13	15.0	45TD32	345
SWCTA3290-4N4-45-AA			2	2.00	9.19	4.88	0.75	4.00	1.13	45.0	45TD32	345

continued  
→

SWAGE360® Cable Accessories



**TYPE SWCTA-AA**  
Swage Cable Angled Terminal

**Ordering Information**

AFL NO.	CABLE SIZE		PAD DETAIL	DIMENSIONS IN INCHES							DIE SIZE	VOLTAGE RATING (KV)
	AAC	ACSR		A	B	C	D	E	F	G		
SWCTA3295-2N-15-AA	954	795 (30/19), 900 (45/7)	1	2.00	9.03	4.36	0.75	2.00	1.00	15.0	45TD32	230
SWCTA3295-2N-45-AA			1	2.00	8.19	3.88	0.75	2.00	1.00	45.0	45TD32	230
SWCTA3295-4N-15-AA			2	2.00	9.03	4.36	0.75	3.00	0.63	15.0	45TD32	345
SWCTA3295-4N-45-AA			2	2.00	8.19	3.88	0.75	3.00	0.63	45.0	45TD32	345
SWCTA3295-4N4-15-AA			2	2.00	10.03	5.36	0.75	4.00	1.13	15.0	45TD32	345
SWCTA3295-4N4-45-AA			2	2.00	9.19	4.88	0.75	4.00	1.13	45.0	45TD32	345
SWCTA32100-2N-15-AA	1000	874.5 (54/7), 900 (54/7), 954 (45/7)	1	2.00	9.03	4.36	0.75	2.00	1.00	15.0	45TD32	230
SWCTA32100-2N-45-AA			1	2.00	8.19	3.88	0.75	2.00	1.00	45.0	45TD32	230
SWCTA32100-4N-15-AA			2	2.00	9.03	4.36	0.75	3.00	0.63	15.0	45TD32	345
SWCTA32100-4N-45-AA			2	2.00	8.19	3.88	0.75	3.00	0.63	45.0	45TD32	345
SWCTA32100-4N4-15-AA			2	2.00	10.03	5.36	0.75	4.00	1.13	15.0	45TD32	345
SWCTA32100-4N4-45-AA			2	2.00	9.19	4.88	0.75	4.00	1.13	45.0	45TD32	345
SWCTA32103-4N-15-AA	1033.5	954 (54/7)	2	2.00	9.03	4.36	0.75	3.00	0.63	15.0	45TD32	345
SWCTA32103-4N-45-AA			2	2.00	8.19	3.88	0.75	3.00	0.63	45.0	45TD32	345
SWCTA32103-4N4-15-AA			2	2.00	10.03	5.36	0.75	4.00	1.13	15.0	45TD32	345
SWCTA32103-4N4-45-AA			2	2.00	9.19	4.88	0.75	4.00	1.13	45.0	45TD32	345
SWCTA32111-4N-15-AA	1113	1033.5 (45/7), 1033.5 (54/7)	2	2.00	9.03	4.36	0.75	3.00	0.63	15.0	45TD32	345
SWCTA32111-4N-45-AA			2	2.00	8.19	3.88	0.75	3.00	0.63	45.0	45TD32	345
SWCTA32111-4N4-15-AA			2	2.00	10.03	5.36	0.75	4.00	1.13	15.0	45TD32	345
SWCTA32111-4N4-45-AA			2	2.00	9.19	4.88	0.75	4.00	1.13	45.0	45TD32	345
SWCTA36119-4N-15-AA	1192.5	1113 (45/7)	2	2.25	9.67	4.57	0.75	3.00	0.63	15.0	45TD36	345
SWCTA36119-4N-45-AA			2	2.25	8.87	4.11	0.75	3.00	0.63	45.0	45TD36	345
SWCTA36119-4N4-15-AA			2	2.25	10.17	5.07	0.75	4.00	1.13	15.0	45TD36	345
SWCTA36119-4N4-45-AA			2	2.25	9.37	4.61	0.75	4.00	1.13	45.0	45TD36	345
SWCTA36127-4N-15-AA	1272	1113 (54/19), 1192.5 (45/7)	2	2.25	9.67	4.57	0.75	3.00	0.63	15.0	45TD36	345
SWCTA36127-4N-45-AA			2	2.25	8.87	4.11	0.75	3.00	0.63	45.0	45TD36	345
SWCTA36127-4N4-15-AA			2	2.25	10.17	5.07	0.75	4.00	1.13	15.0	45TD36	345
SWCTA36127-4N4-45-AA			2	2.25	9.37	4.61	0.75	4.00	1.13	45.0	45TD36	345
SWCTA36135-4N-15-AA	1351.5	1192.5 (54/19), 1272 (45/7)	2	2.25	9.67	4.57	0.75	3.00	0.63	15.0	45TD36	345
SWCTA36135-4N-30-AA			2	2.25	9.41	4.31	0.75	3.00	0.63	30.0	45TD36	345
SWCTA36135-4N-45-AA			2	2.25	8.87	4.11	0.75	3.00	0.63	45.0	45TD36	345
SWCTA36135-4N4-15-AA			2	2.25	10.17	5.07	0.75	4.00	1.13	15.0	45TD36	345
SWCTA36135-4N4-45-AA	2	2.25	9.37	4.61	0.75	4.00	1.13	45.0	45TD36	345		
SWCTA36143-4N-15-AA	1431	1272 (54/19), 1351.5 (45/7)	2	2.25	9.67	4.57	0.75	3.00	0.63	15.0	45TD36	345
SWCTA36143-4N-45-AA			2	2.25	8.87	4.11	0.75	3.00	0.63	45.0	45TD36	345
SWCTA36143-4N4-15-AA			2	2.25	10.17	5.07	0.75	4.00	1.13	15.0	45TD36	345
SWCTA36143-4N4-45-AA			2	2.25	9.37	4.61	0.75	4.00	1.13	45.0	45TD36	345

SWAGE360® Cable Accessories

continued  
→



**TYPE SWCTA-AA**  
Swage Cable Angled Terminal

**Ordering Information**

SWAGE360® Cable Accessories

AFL NO.	CABLE SIZE		PAD DETAIL	DIMENSIONS IN INCHES							DIE SIZE	VOLTAGE RATING (KV)
	AAC	ACSR		A	B	C	D	E	F	G		
SWCTA36151-4N-15-AA	1510.5	1351.5 (54/19), 1431 (45/7)	2	2.25	9.67	4.57	0.75	3.00	0.63	15.0	45TD36	345
SWCTA36151-4N-45-AA			2	2.25	8.87	4.11	0.75	3.00	0.63	45.0	45TD36	345
SWCTA36151-4N4-15-AA			2	2.25	10.17	5.07	0.75	4.00	1.13	15.0	45TD36	345
SWCTA36151-4N4-45-AA			2	2.25	9.37	4.61	0.75	4.00	1.13	45.0	45TD36	345
SWCTA36159-4N-15-AA	1590	1431 (54/19), 1510.5 (45/7)	2	2.25	9.67	4.57	0.75	3.00	0.63	15.0	45TD36	345
SWCTA36159-4N-45-AA			2	2.25	8.87	4.11	0.75	3.00	0.63	45.0	45TD36	345
SWCTA36159-4N4-15-AA			2	2.25	10.17	5.07	0.75	4.00	1.13	15.0	45TD36	345
SWCTA36159-4N4-45-AA			2	2.25	9.37	4.61	0.75	4.00	1.13	45.0	45TD36	345
SWCTA36175-4N-15-AA	1750	1510.5 (54/19), 1590 (45/7)	2	2.25	9.67	4.57	0.75	3.00	0.63	15.0	45TD36	345
SWCTA36175-4N-45-AA			2	2.25	8.87	4.11	0.75	3.00	0.63	45.0	45TD36	345
SWCTA36175-4N4-15-AA			2	2.25	10.17	5.07	0.75	4.00	1.13	15.0	45TD36	345
SWCTA36175-4N4-45-AA			2	2.25	9.37	4.61	0.75	4.00	1.13	45.0	45TD36	345
SWCTA36180-4N-15-AA	1800	1590 (54/19)	2	2.25	9.67	4.57	0.75	3.00	0.63	15.0	45TD36	345
SWCTA36180-4N-45-AA			2	2.25	8.87	4.11	0.75	3.00	0.63	45.0	45TD36	345
SWCTA36180-4N4-15-AA			2	2.25	10.17	5.07	0.75	4.00	1.13	15.0	45TD36	345
SWCTA36180-4N4-45-AA			2	2.25	9.37	4.61	0.75	4.00	1.13	45.0	45TD36	345
SWCTA44200-4N-15-AA	2000	1780 (84/19)	2	2.75	10.31	4.49	1.00	3.00	0.63	15.0	65TD44	345
SWCTA44200-4N-45-AA			2	2.75	9.60	4.08	1.00	3.00	0.63	45.0	65TD44	345
SWCTA44200-4N4-15-AA			2	2.75	10.81	4.99	1.00	4.00	1.13	15.0	65TD44	345
SWCTA44200-4N4-45-AA			2	2.75	10.10	4.58	1.00	4.00	1.13	45.0	65TD44	345
SWCTA44230-4N-15-AA	2250	2156 (84/19), 2167 (72/7)	2	2.75	10.31	4.49	1.00	3.00	0.63	15.0	65TD44	345
SWCTA44230-4N-45-AA			2	2.75	9.60	4.08	1.00	3.00	0.63	45.0	65TD44	345
SWCTA44230-4N4-15-AA			2	2.75	10.81	4.99	1.00	4.00	1.13	15.0	65TD44	345
SWCTA44230-4N4-45-AA			2	2.75	10.10	4.58	1.00	4.00	1.13	45.0	65TD44	345
SWCTA44250-4N-15-AA	2500	2312 (76/19)	2	2.75	10.31	4.49	1.00	3.00	0.63	15.0	65TD44	345
SWCTA44250-4N-45-AA			2	2.75	9.60	4.08	1.00	3.00	0.63	45.0	65TD44	345
SWCTA44250-4N4-15-AA			2	2.75	10.81	4.99	1.00	4.00	1.13	15.0	65TD44	345
SWCTA44250-4N4-45-AA			2	2.75	10.10	4.58	1.00	4.00	1.13	45.0	65TD44	345