

TYPE SWCL-AA Swage Bus to Bus Long Splice

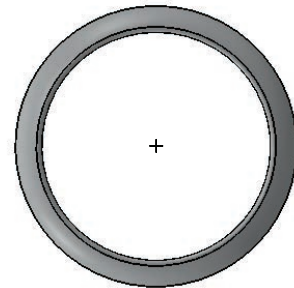
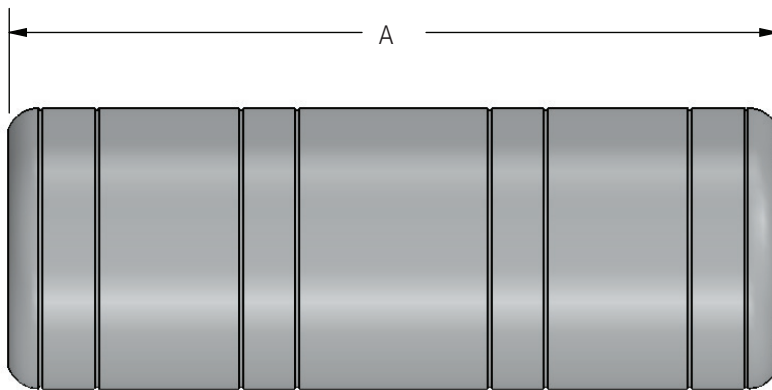
A double Swage type bus to bus long splice.

Material

Aluminum Alloy

Notes

- Bore will be lined with AFL Filler compound (AFC) and capped.



Ordering Information

AFL NO.	S.P.S.	DIMENSIONS IN INCHES	DIE SIZE	VOLTAGE RATING (kV)
		A		
SWCL100-AA	1	10.00	65TD100	230
SWCL150-AA	1.5	10.00	65TD150	230
SWCL200-AA	2	10.00	65TD200	230
SWCL250-AA	2.5	10.00	65TD250	230
SWCL300-AA	3	12.00	65TD300	500
SWCL350-AA	3.5	12.00	65TD350	500
SWCL400-AA	4	12.00	65TD400	500
SWCL500-AA	5	17.00	85TD500	500
SWCL600-AA	6	19.00	115TD600	500