

TYPE SWGES Swage Split Elbow

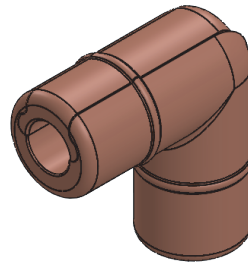
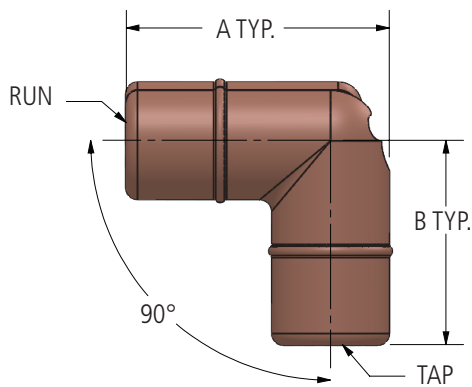
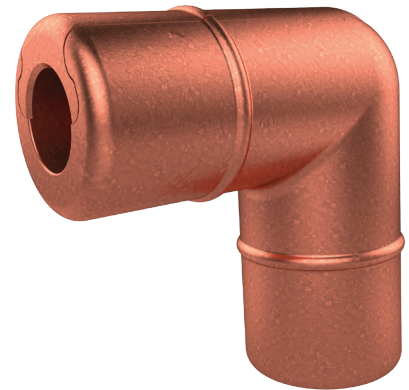
A swage type split elbow connects a cable or rod at a 90-degree angle to the main run. This part features a sliding channel for ease of installation.

Material

Copper Alloy

Notes

- For tin plating, add "-SN" to end of catalog number EX: SWGES2450-SN
- For detailed conductor range information, please see page 33 (L11557).



Ordering Information

SWGES XX YYY — XX ZZZ — (Leave blank if same as Run)

Part Family Die Code Run Cable Code Die Code Tap Cable Code

Die Code comes from maximum connector OD from Table at right.

- EX: Tin plated split elbow for 250MCM Cu to 500MCM Cu is SWGES2425-2450-SN
- EX: Split elbow for 250MCM Cu to 500MCM is SWGES2425-2450

AFL NO.	CABLE RANGE		DIMENSIONS IN INCHES		DIE SIZE		
	RUN	TAP	A	B			
SWGES2013-206	1/0	2/0	#2	2.80	2.17	45TD20	
SWGES2013			1/0	2/0	2.80	2.17	45TD20
SWGES2013-2017			3/0	2.80	2.17	45TD20	
SWGES2013-2025			250	2.80	2.17	45TD20	
SWGES2013-2035			5/8" ROD	2.80	2.17	45TD20	
SWGES2013-2045			3/4" ROD	2.80	2.17	45TD20	
SWGES2017	3/0	3/0	2.80	2.17	45TD20		
SWGES2017-2025		250	2.80	2.17	45TD20		
SWGES2021	4/0	4/0	2.80	2.17	45TD20		
SWGES2021-2025		250	2.80	2.17	45TD20		
SWGES2021-2045		3/4" ROD	2.80	2.17	45TD20		
SWGES2025-2021	250	4/0	2.80	2.17	45TD20		
SWGES2025		250	2.80	2.17	45TD20		
SWGES2025-2045		3/4" ROD	2.80	2.17	45TD20		
SWGES2421-2450	4/0	500	3.05	2.30	45TD24		
SWGES2425-2435	250	350	3.05	2.30	45TD24		
SWGES2430	300	300	3.05	2.30	45TD24		
SWGES2435-2421	350	4/0	3.05	2.30	45TD24		
SWGES2435		350	3.05	2.30	45TD24		
SWGES2435-2440		400	3.05	2.30	45TD24		
SWGES2450-2421	500	4/0	3.05	2.30	45TD24		
SWGES2450-2425		250	3.05	2.30	45TD24		
SWGES2450		500	3.05	2.30	45TD24		