

TYPE SWGFP Swage Fence Post Connector

A Swage type fence post connector that connects cable(s) or rod(s) to a post.

Material

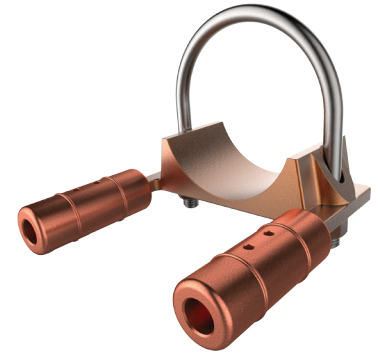
Copper

Hardware

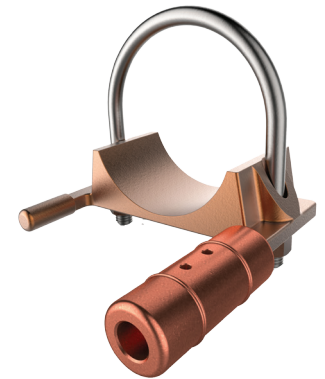
Stainless steel U-bolts, lockwashers and Everdur nuts

Notes

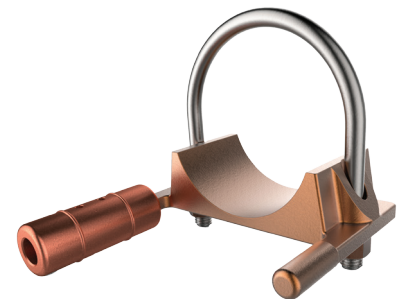
- For tin plating, add "-SN" to catalog number. EX: SWGFP300-2450-2450-SN.
- For detailed conductor range information, please see page 33 (L11557).



SWGFP



SWGFP-R



SWGFP-L

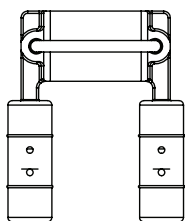
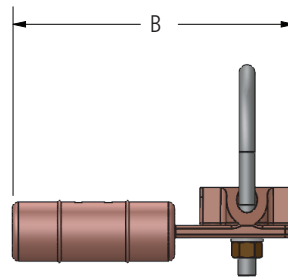
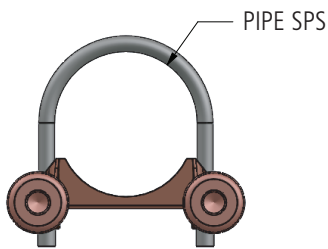
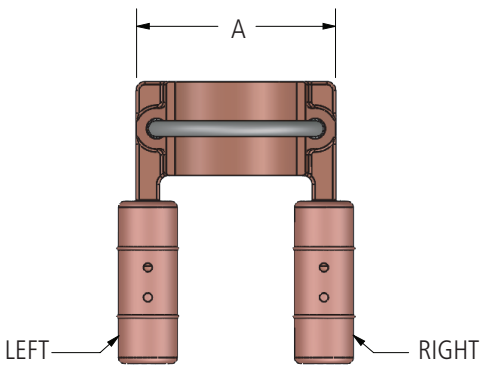


FIGURE 1—BOTH

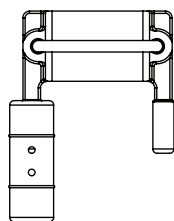


FIGURE 2—LEFT

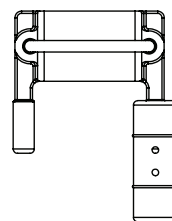


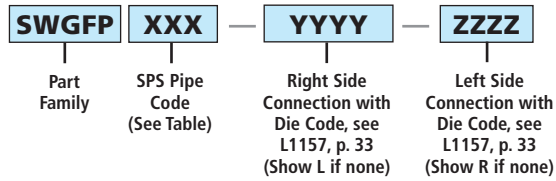
FIGURE 3—RIGHT

GROUNDING

continued
→

TYPE SWGFP Swage Fence Post Connector

Ordering Information



Die Code comes from maximum connector OD Table on L11557 (page 33).

- EX: Tin plated fence post for both sides 500MCM on a 3" pipe is SWGFP300-2450-2450-SN.
- EX: Fence post for 4/0 on the left on a 1.50" pipe is SWGFP150-L-2021.

| SPS (INCHES) | PIPE CODE | DIMENSIONS IN INCHES | |
|--------------|-----------|----------------------|------|
| | | A | B |
| 1.00 | 100 | 2.31 | 5.00 |
| 1.25 | 125 | 3.00 | 5.75 |
| 1.50 | 150 | 3.50 | 5.75 |
| 2.00 | 200 | 3.69 | 6.00 |
| 2.50 | 250 | 4.25 | 6.00 |
| 3.00 | 300 | 5.19 | 6.50 |
| 3.50 | 350 | 5.88 | 6.50 |
| 4.00 | 400 | 6.38 | 6.63 |
| 5.00 | 500 | 7.53 | 6.75 |
| 6.00 | 600 | 8.69 | 7.00 |
| 8.00 | 800 | 10.78 | 7.25 |