

TYPE SWGFPB Swage Fence Post and Gate Connector

This is a fence post connector that connects the cable(s) or rod(s) to a fencepost and then to a gate.

Material

Copper Alloy

Hardware

Stainless steel U-bolts, lockwashers and Everdur nuts

Notes

- For tin plating, add "-SN" to catalog number.
EX: SWGFPB300-2450-2450-150-SN.
- For detailed conductor range information, please see page 33 (L11557).
- Default braid length is 12". Other lengths available upon request.

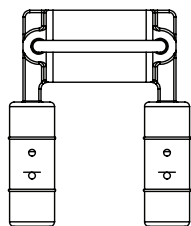
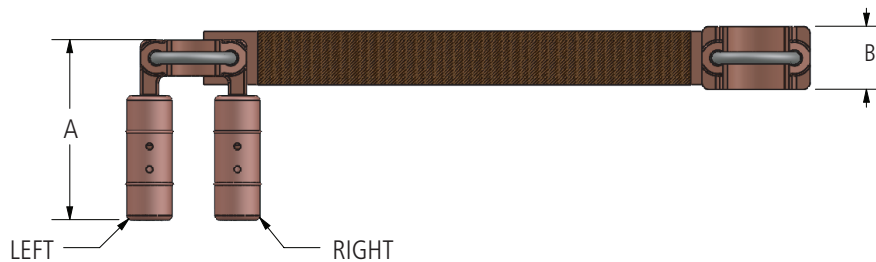
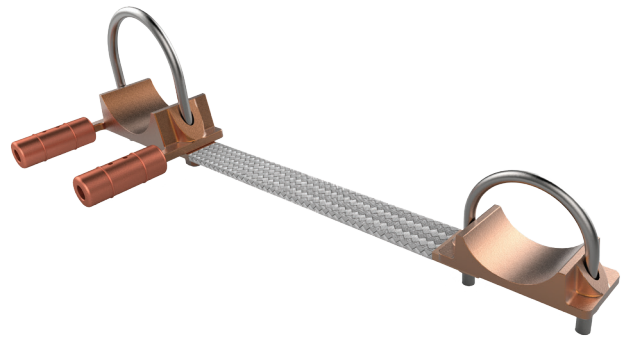


FIGURE 1—BOTH

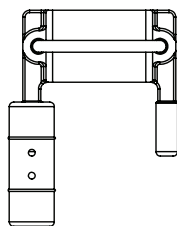


FIGURE 2—LEFT

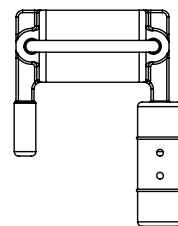
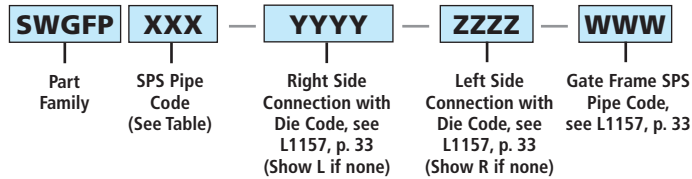


FIGURE 3—RIGHT

continued
→

TYPE SWGFPB Swage Fence Post and Gate Connector

Ordering Information



Die Code comes from maximum connector OD Table on L11557 (page 33).

- EX: Tin plated fence post bracket for both sides 500MCM on a 3" pipe mounted to a 1.50" pipe (Gate Frame) is SWGFPB300-2450-2450-150-SN.
- EX: Fence post bracket for 4/0 on the left on a 1.50" pipe mounted to a 1.50" pipe (Gate Frame) is SWGFPB150-L-2021-150.

Connector

SPS (INCHES)	PIPE CODE	A (INCHES)
1.00	100	5.00
1.25	125	5.75
1.50	150	5.75
2.00	200	6.00
2.50	250	6.00
3.00	300	6.50
3.50	350	6.50
4.00	400	6.63
5.00	500	6.75
6.00	600	7.00
8.00	800	7.25

Gate Frame

SPS (INCHES)	PIPE CODE	A (INCHES)
1.00	100	1.00
1.25	125	1.75
1.50	150	1.75
2.00	200	2.00
2.50	250	2.00
3.00	300	2.50