

TYPE SWGP Swage Parallel

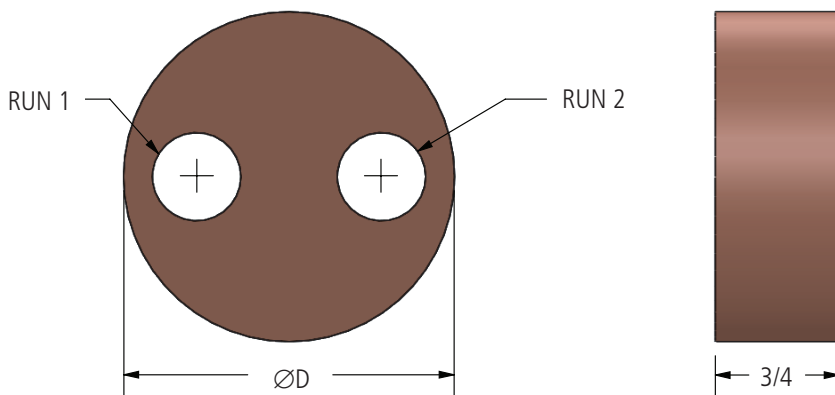
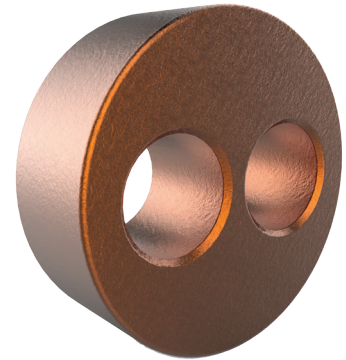
A Swage type parallel connector is used to connect cable-to-cable or cable-to-rod.

Material

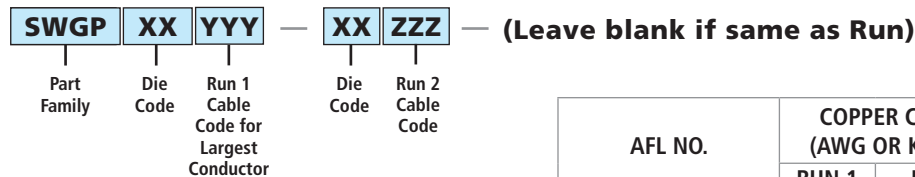
Copper Alloy

Ordering Information

- For tin plating, add "-SN" to end of catalog number. Example: SWGP246-SN.
- For detailed conductor range information, please see page 33 (L11557).



Ordering Information



Die Code comes from maximum connector OD from Table at right.

- EX: Tin plated parallel connector for 500MCM Cu to 250MCM Cu is SWGP2450-2425-SN
- EX: Parallel connector for 250MCM Cu to 250MCM Cu is SWGP2025

AFL NO.	COPPER CABLE (AWG OR KCMIL)		DIMENSIONS IN INCHES	DIE SIZE
	RUN 1	RUN 2	OD	
SWGP246	#2	#2	1.50	45TD24
SWGP3021-306	4/0	#2	1.88	45TD30
SWGP3025-306	250	#2	1.88	45TD30
SWGP3050-306	500	#2	1.88	45TD30
SWGP3213	1/0-2/0	1/0-2/0	2.00	45TD32
SWGP3217	3/0	3/0	2.00	45TD32
SWGP3221-3213	4/0	1/0-2/0	2.00	45TD32
SWGP3221	4/0	4/0	2.00	45TD32
SWGP3225-3213	250	1/0-2/0	2.00	45TD32
SWGP3225-3221	250	4/0	2.00	45TD32
SWGP3225	250	250	2.00	45TD32
SWGP3230	300	300	2.00	45TD32
SWGP3235-3213	350	1/0-2/0	2.00	45TD32
SWGP3235-3225	350	250	2.00	45TD32
SWGP3235	350	350	2.00	45TD32
SWGP3245-3213	450	1/0-2/0	2.00	45TD32
SWGP3245-3225	450	250	2.00	45TD32
SWGP3650-3613	500	1/0-2/0	2.25	45TD36
SWGP3650-3625	500	250	2.25	45TD36
SWGP3650-3645	500	450	2.25	45TD36
SWGP3650	500	500	2.25	45TD36