

TYPE SWGPS Swage Split Parallel

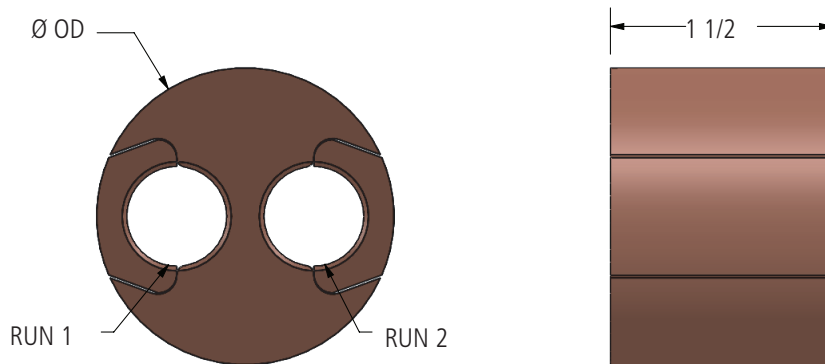
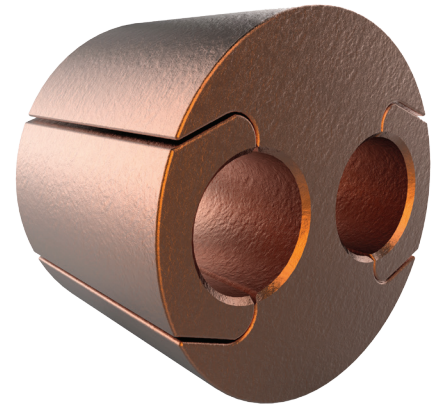
A Swage type split parallel connector is used to connect cable to another cable. It features a sliding channel for ease of installation.

Material

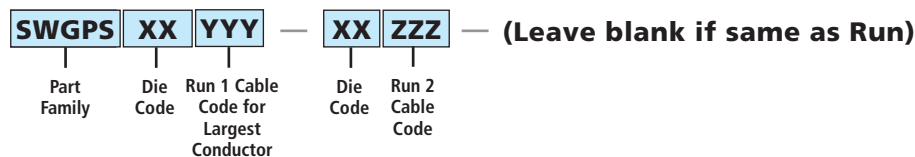
Copper Alloy

Notes

- For tin plating, add "-SN" to end of catalog number. EX: SWGPS2025-SN.
- For detailed conductor range information, please see page 33 (L11557).



Ordering Information



Die Code comes from maximum connector OD from Table at right.

- EX: Tin plated split parallel for 250MCM Cu to 500MCM Cu is SWGPS4450-4425-SN
- EX: Split parallel for 250MCM Cu to 250MCM is SWGPS3225

AFL NO.	COPPER CABLE (AWG OR KCMIL)		DIMENSIONS IN INCHES	DIE SIZE
	RUN 1	RUN 2	OD	
SWGPS2413-244	1/0-2/0	#4	1.50	45TD24
SWGPS2421-246	4/0	#2	1.50	45TD24
SWGPS3213	1/0-2/0	1/0-2/0	2.00	45TD32
SWGPS3221	4/0	4/0	2.00	45TD32
SWGPS3221-3213	4/0	1/0-2/0	2.00	45TD32
SWGPS3225-3213	250	1/0-2/0	2.00	45TD32
SWGPS3225-3221	250	4/0	2.00	45TD32
SWGPS3225	250	250	2.00	45TD32
SWGPS3230	300	300	2.00	45TD32
SWGPS4450-4425	500	250	2.75	65TD44
SWGPS4450	500	500	2.75	65TD44