

TYPE SWGDPL Swage Terminal, 1 Hole or 2 Hole

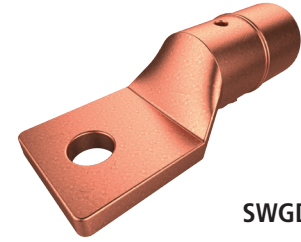
A Swage type terminal used to ground a cable or a rod to a 1-hole or 2-hole lug.

Material

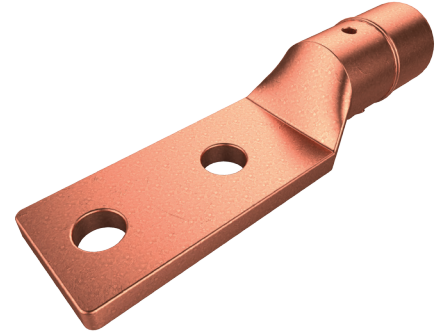
Copper Alloy

Notes

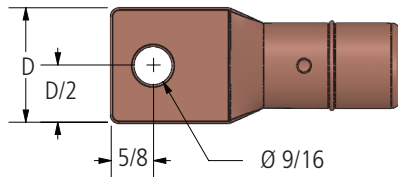
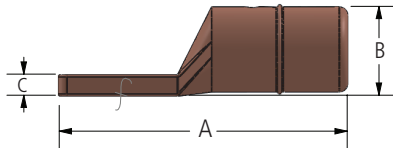
- For tin plating, add "-SN" to catalog number. Example: SWGDPL2025-2N-SN.
- For detailed conductor range information, please see page 33 (L11557).



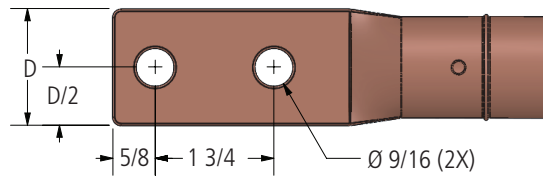
SWGDPL-1



SWGDPL-2N



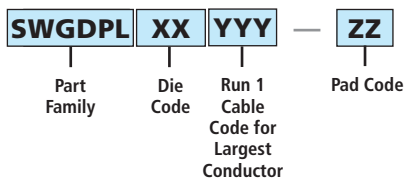
Pad Detail 1—SWGDPL-1



Pad Detail 2—SWGDPL-2N

GROUNDING

Ordering Information



Die Code comes from maximum connector OD from Table at right.

- EX: Tin plated terminal for 250MCM Cu is SWGDPL2025-1-SN.
- EX: Terminal for 250MCM Cu is SWGDPL2025-1.

AFL NO.	COPPER CABLE (AWG OR KCMIL)	DIMENSIONS IN INCHES				DIE SIZE
	TAP	A	B	C	D	
SWGDPL204-1	#4	4.25	1.31	0.33	1.69	45TD20
SWGDPL204-2N	#4	6.00	1.31	0.30	1.69	45TD20
SWGDPL206-1	#2	4.25	1.31	0.33	1.69	45TD20
SWGDPL206-2N	#2	6.00	1.31	0.30	1.69	45TD20
SWGDPL2013-1	1/0-2/0	4.25	1.31	0.33	1.69	45TD20
SWGDPL2013-2N	1/0-2/0	6.00	1.31	0.30	1.69	45TD20
SWGDPL2017-1	3/0	4.25	1.31	0.33	1.69	45TD20
SWGDPL2017-2N	3/0	6.00	1.31	0.30	1.69	45TD20
SWGDPL2021-1	4/0	4.25	1.31	0.33	1.69	45TD20
SWGDPL2021-2N	4/0	6.00	1.31	0.30	1.69	45TD20
SWGDPL2025-1	250	4.25	1.31	0.33	1.69	45TD20
SWGDPL2025-2N	250	6.00	1.31	0.30	1.69	45TD20
SWGDPL2421-2N	4/0	6.50	1.56	0.40	1.72	45TD24
SWGDPL2425-1	250	4.50	1.56	0.44	1.72	45TD24
SWGDPL2430-1	300	4.50	1.56	0.44	1.72	45TD24
SWGDPL2430-2N	300	6.50	1.56	0.40	1.72	45TD24
SWGDPL2435-1	350	4.50	1.56	0.44	1.72	45TD24
SWGDPL2435-2N	350	6.50	1.56	0.40	1.72	45TD24
SWGDPL2440-2N	400	6.50	1.56	0.40	1.72	45TD24
SWGDPL2450-1	500	4.50	1.56	0.44	1.72	45TD24
SWGDPL2450-2N	500	6.50	1.56	0.40	1.72	45TD24