

## DOSSERT® TYPE 14400

### Aluminum Welded, External Fit End Plug

Weld type end plug is designed for use on outside of pipe. Can be used on both Schedule 40 and Schedule 80 pipe. Used to minimize electrostatic losses and to prevent nesting of birds.

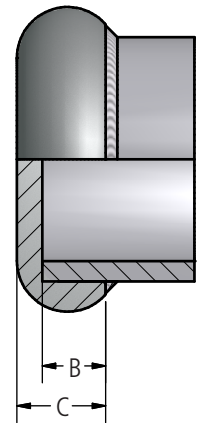
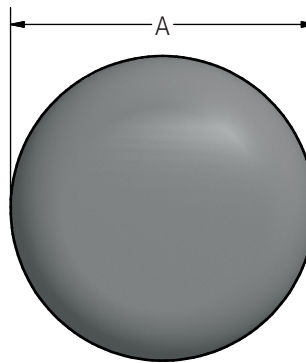
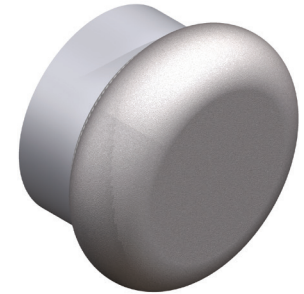
#### Material

Aluminum Alloy

#### Ordering Instructions

Step 1: Determine Catalog Number  
Determine the catalog number based on bus conductor size.

Example: An end plug for 3" Schedule 40 bus conductor, the complete catalog number is: 14408.



230 kV Aluminum  
Welded End Bells

### Ordering Information

CATALOG NUMBER	SPS	DIMENSIONS IN INCHES			NOMINAL WEIGHT LBS
		A	B	C	
14402	3/4	1.44	0.22	0.44	0.03
14403	1	1.81	0.28	0.53	0.06
14404	1-1/4	2.19	0.34	0.75	0.12
14405	1-1/2	2.38	0.38	0.78	0.13
14406	2	3.00	0.47	0.88	0.34
14407	2-1/2	3.69	0.59	1.12	0.44
14408	3	4.31	0.72	1.50	0.88
14409	3-1/2	4.97	0.81	1.62	1.40
14410	4	5.66	0.91	1.88	2.30
14412	5	6.72	1.12	2.22	3.50
14413	6	7.88	1.34	2.44	4.75