

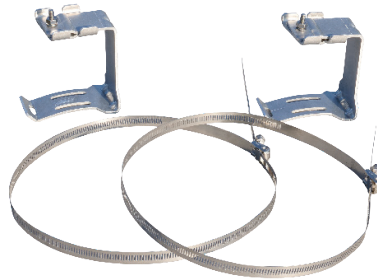
For complete installation instructions and video, visit www.AFLglobal.com/APEX or use the QR code.



AFL APEX® AERIAL HANGER BRACKET KIT

This kit includes (2) Aerial Strand Mount Clamps and (2) Mount Straps

Apex Aerial Hanger Bracket Kit is designed to mount the Apex closure family on Aerial Strand.



Ordering Information

DESCRIPTION	AFL NO.
Aerial Hanger Bracket Kit	AX-KIT-AERIAL-1

INSTALLATION OF HANGER BRACKET

1. Install hanger bracket on dome so Apex Basket is at the bottom and facing up. The mount insert should be at the top of the base when installing hanger brackets. (Figure 1)
2. Both Hanger brackets should face the same direction. (Figure 2)



Figure 1

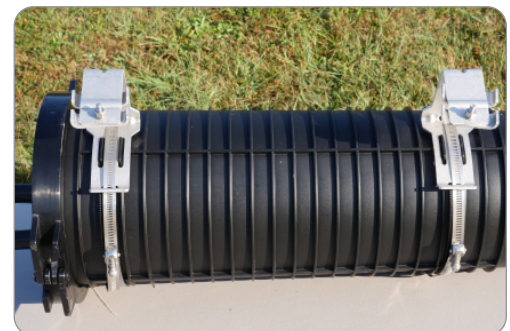


Figure 2

3. Install straps through 2 slots in hanger bracket. (Figure 3)
4. Place bracket on closure dome tabs making sure the mount insert is at the top. (Figure 4)
5. Route straps around closure and engage worm gear. Make sure they are routed between the slots under the Apex dome. (Figure 5)
6. Tighten and secure both straps. Trim mounting strap if desired.

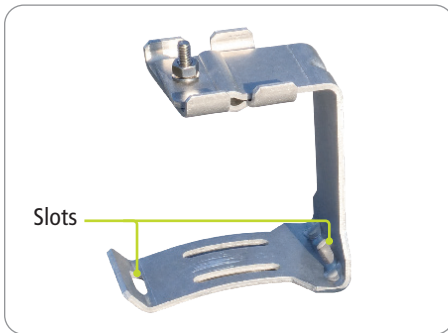


Figure 3

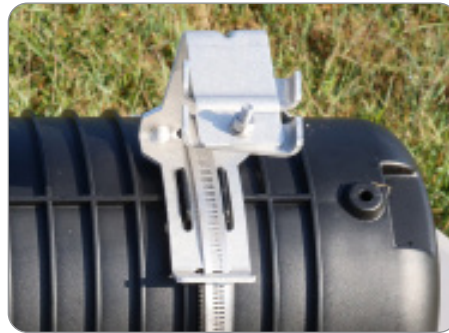


Figure 4



Figure 5

INSTALLING APEX ON STRAND

1. Loosen both hanger brackets but do not allow hardware to dis engage. (Figure 6)
2. Slip Apex and brackets over strand allowing strand to nestle in the corner of the bracket. (Figure 7)
3. Slide strand into place under clamp and secure both brackets with Can Wrench or similar tool. (Figure 8)



Figure 6



Figure 7



Figure 8