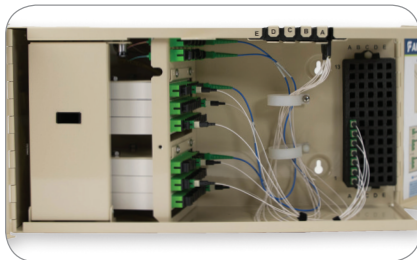
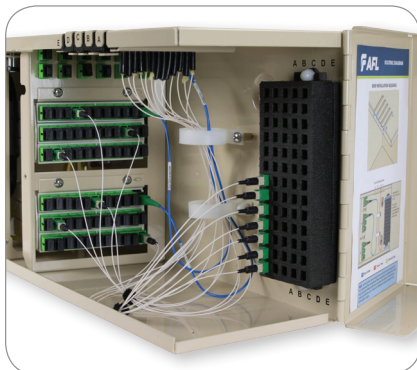




Mini IDC (Closed)



Mini IDC (Open)



Detailed Drop Routing and Connector Storage

## IDEAA® Mini Interior Distribution Cabinet

The IDEAA Mini Interior Distribution Cabinet (Mini IDC) provides a convenient and extremely compact modular approach to centralized fiber distribution in small MDUs. The Mini IDC provides up to 64 home run-drop output connections using two 1x32 IDEAA Splitter Modules. The Mini IDC utilizes innovative jumper routing and drop strain relief to enable efficient fiber management. Because of the adapter interface of the IDEAA splitter module, no additional interconnection is needed between the splitter and drop cables, allowing for MDU splitting and drop fiber distribution in an extremely compact size. The Mini-IDC also provides a convenient and innovative way to store connectors from installed drops not yet ready for active service. Clear labeling allows connectors to be easily identifiable so they can be removed and connected to splitter ports when ready for service.

### Features

- Designed for one or two IDEAA splitter modules for up to 64 subscriber connections using 1x32 splitters
- Extremely compact size limits footprint in telecom and electrical closets
- Dedicated fiber management pathways provide simplified and clean fiber routing
- Unobtrusive splice tray holder for splicing input fibers
- Integrated strain relief for 4.8 mm or 3.0 mm MDU drop cables
- Mounting keyholes for easy wall-mounting
- Connector storage for unused terminated drops

### Specifications

THROUGH PORTS	HEIGHT	WIDTH	DEPTH	SPLITTER CAPACITY	INPUT/PASS
Up to 64 Fiber	9.25"	18"	6.25"	2	12

### Ordering Information

DESCRIPTION	AFL NO.
IDEAA Mini Interior Distribution MDU Cabinet, 32-64 Fiber — Includes one LL-2425 Single-Fiber Splice Tray for input fiber splicing (input pigtails included)	EA000968
Heyco M3231GZA Fitting for Flat Drop Cable (includes 5)	EA000794
Heyco M3231 Fitting, 0.17" - 0.45" (includes 5)	EA000795
Heyco M3200 Fitting, 0.26" - 0.55" (includes 5)	EA000796



## IDEAA®

### Integrated Distribution Enabling Access Apparatus

AFL's Integrated Distribution Enabling Access Apparatus (IDEAA) product family revolutionizes the way passive optical splitters are deployed in the network. Utilizing a small modular design and leveraging planar waveguide technology to yield an ultra low polarization dependent loss, low insertion loss, and high port uniformity, the IDEAA product possesses the flexibility to be used in a wide variety of applications. The IDEAA module provides a lower cost and more versatile alternative to preexisting PON architecture arrangements. Rather than being confined to a traditional "splitter-in-cabinet" design, the IDEAA product family allows service providers to employ PON architecture across all areas of the network.

The IDEAA module's unique design enables customers to utilize a revolutionary stand-alone mounting capability. In addition to conforming to a number of different applications, each IDEAA module can be mounted as an independent distribution point. This unit can be neatly secured to a wall or even placed on an existing rack or cabinet.

### IDEAA SC and LC Modules

The IDEAA SC and LC modules come equipped with an internal PLC device which is factory terminated and tested. An integrated hinge provides easy access to the SC or LC adapter interface while reducing space when mounted. The SC and LC modules use APC connectors to meet the strict back reflection requirements of the latest PON architectures. A wide variety of PLC splitter configurations are available. A dual 1x16 module is available with SC APC outputs and LC APC inputs. Two SC APC to LC APC jumpers are included to connect to the EDC SC APC input ports.

### IDEAA MPO Module

The IDEAA MPO module is also outfitted with PLC technology that is factory terminated and tested. The use of MPO technology allows for mass deployment of PON distribution fibers in Multiple-Dwelling Unit (MDU) applications. Up to three (3) modules can be attached to each other to allow for a maximum deployment of 288 distribution fibers. A wide variety of PLC splitter configurations are available as well.

### Applications

- Direct Wall Mount
- Interior Wall Mount Enclosure / Pedestal
- Exterior Wall Mount Enclosure
- Exterior Distribution Enclosure / Pedestal
- Exterior Distribution Cabinet
- Splice Closure – Sealed
- Rack Mount Bracket

### Features

- SC and LC Module configurations can accommodate up to a 32 fiber distribution
- MPO Module configuration can accommodate up to a 96 fiber distribution
- Modular design allows for highly flexible and scalable deployments
- Durable hardened plastic exterior provides a rugged encasement
- Single and multi-package modules available
- Single-mode fiber compliant to IEC 60793 and ITU-T G.652.D

### Direct Wall Mount Capability

The IDEAA product can easily mount to an interior wall without needing any additional enclosures. Simply use the integrated hinge plate to install the module directly to a wall. The module contains port identification for each output fiber.

### Specifications

PARAMETER	VALUE			
	1 X 4	1 X 8	1 X 16	1 X 32
Wavelength Range (nm)	1280 - 1650			
Typical Insertion Loss (dB)	6.7	9.8	12.9	16.6
Max Insertion Loss (dB)	7.4	10.5	14	17.5
Max IL Uniformity (dB)	1	1	1.5	2
Return Loss (dB)	≥55			
Directivity (dB)	≥55			
Max PDL (dB)	0.3			

### Ordering Information

DESCRIPTION	AFL NO.
IDEAA MODULE, SC, 1X32	EA000102
IDEAA MODULE, SC, LC INPUT, DUAL 1x16	EA000583
IDEAA MODULE, SC, 1X16	EA000103
IDEAA MODULE, SC, 1X8	EA000104
IDEAA MODULE, SC, 1X4	EA000105
IDEAA MODULE, LC, 2X32	EA000547
IDEAA MODULE, MTP, 3X96	EA000101