

LMS Line Modules for Network Interface Devices

The strength of the Network Interface Device (NID) product line lies in our versatile family of Line Interface Modules. The LMS Line Module has been an integral part of the NID market for years with millions of NIDs deployed throughout the country.

Features

- Field upgradeable
- Standard line module footprint
- Self-contained, simply press in place
- Available with half ringers and RFI filters
- Line modules used in: SNI-2900, SNI-730, SNI-760 NIDs
- UL® Listed
- Compatible with Corning CAC® 7600 and Tyco RayNID®

Specifications

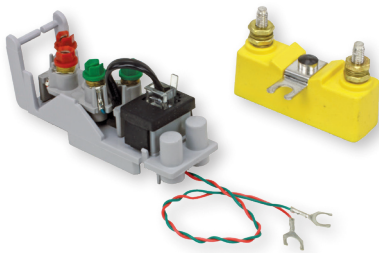
PARAMETER	VALUE												
Contact Construction	50 micro inches hard gold / 100 micro inches nickel plated phosphor bronze												
Contact Force	Minimum 100 grams												
Temperature Cycling with Humidity	30 day cycling from 40° to 120°F (4.44° to 48.88°C) with 90% RH												
Coax Module	<table border="0"> <tr> <td>Impedance</td> <td>75 Ω</td> </tr> <tr> <td>Insertion Loss</td> <td>≤ 0.12 dB maximum, 5 MHz-1 GHz</td> </tr> <tr> <td>Return Loss</td> <td>≤ 21 dB minimum, 5 MHz-1 GHz</td> </tr> <tr> <td>"F" Connector</td> <td>Meets SCTE specification IPS-SP-400</td> </tr> <tr> <td>Coax Cable</td> <td>Conforms to MIL-C-17/94F specification</td> </tr> <tr> <td>RF Shielding</td> <td>100 dB, 5 MHz to 1 GHz, tested per MIS-20097D</td> </tr> </table>	Impedance	75 Ω	Insertion Loss	≤ 0.12 dB maximum, 5 MHz-1 GHz	Return Loss	≤ 21 dB minimum, 5 MHz-1 GHz	"F" Connector	Meets SCTE specification IPS-SP-400	Coax Cable	Conforms to MIL-C-17/94F specification	RF Shielding	100 dB, 5 MHz to 1 GHz, tested per MIS-20097D
Impedance	75 Ω												
Insertion Loss	≤ 0.12 dB maximum, 5 MHz-1 GHz												
Return Loss	≤ 21 dB minimum, 5 MHz-1 GHz												
"F" Connector	Meets SCTE specification IPS-SP-400												
Coax Cable	Conforms to MIL-C-17/94F specification												
RF Shielding	100 dB, 5 MHz to 1 GHz, tested per MIS-20097D												
xDSL	1 REF: LMS ADSL2/VDSL2 Data Sheet 2 REF: LPF-200 ADSL Data Sheet												

Standard Configurations

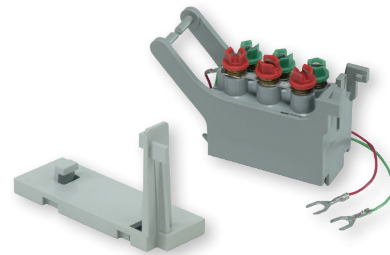
MODEL NO.	AFL NO.
LMS 1-J-1	DM00024
LMS 1-J-1-90	DM000768
LM 1-C-1 w/ Adapter Bracket	DM000656
LMS ADSL2/VDSL2 Splitter	DM000695
LPF-200 w/ Adapter Bracket	DM000658

LMS Line Modules for Network Interface Devices

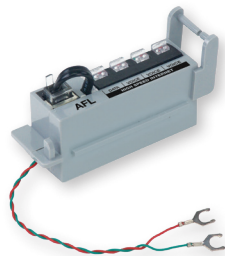
Typical Configurations



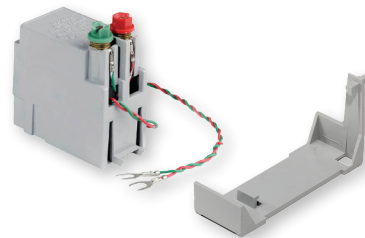
LMS 1J-1-90
(Add-a-Line Kit)



LM 1-C1 Module with Adapter Bracket
(Bunch Block)



LMS ADSL2+/VDSL2 Splitter



LPF-200 ADSL Splitter
with Adapter Bracket

Custom Order Matrix (consult customer service for availability)

LMS	Line Module Security	Subscriber Termination	Type of Electronics	Lightning Protection
	1	J	1	90
	1 = Without individual subscriber security covers	C = 6 screw, 2 wire, Bridging Module D = 4 screw, 4 wire, RJ-14 Interface (Green, Yellow, Red and Black are electrically active) J = 4 Screw, 2 Wire, RJ-11 Interface (Dual Green and Red screws electrically active)	1 = Interface Module only 2 = Half Ringer Equivalence 4 = RFI Filter (Radio Frequency Interference)	37 = 125 57 = 356 90 = 455 N = NONE

EXAMPLE: LMS – 1 – J – 1 – 90

This model number indicates that the following has been ordered:
A line module, supplied with an individual subscriber security cover, 4 screws, 2-wire RJ-11 interface circuit module (interface only) and is supplied with a 45-HS lightning protector.