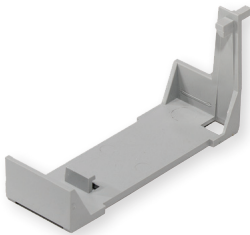
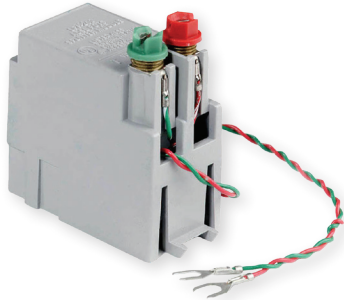


## LPF-200 Series ADSL POTS Splitters



CAC Line Module Adapter

AFL's line of ADSL NID POTS Splitter solutions meets most indoor and outdoor requirements for single-line applications. Packaged in the standard Line Module footprint, we have developed a solution that easily fits into most NIDs as a CPE device. The module occupies only one position within the NID and is housed in a plastic shell and encapsulated to provide an environmentally sealed product. All direct inside wiring connections to the module interface to colored, plastic coated washer screws.

### Specifications

PARAMETER	VALUE
DC Loop Current (mA)	0-10
DC Resistance ( $\Omega$ )	$\leq 19$
Insertion Loss (1004 Hz)	0.5 dB maximum; 0.2 dB typical (ZTc @ 900, ZTr @ 600)
Attenuation Distortion (Relative to Loss @ 1004 Hz)	$\pm 0.2$ dB; 200-3400 Hz (ZTc @ 900, ZTr @ 600) $\pm 0.3$ dB; 200-4000 Hz (ZTc @ 900, ZTr @ 600)
Delay Distortion	< 85 mSec from 200-4000 Hz
Return Loss (Voice Band)	13 dB ERL; 10 dB SRL-Low; 14 dB SRL-High
Longitudinal Balance; Two Port Technique	> 80 dB; 200-2 kHz , 0-30 mA > 60 dB; 2-4 kHz , 0-30 mA
Tip-to-Ring Capacitance (POTS Port)	< 100 nF; 20-30 Hz
ADSL Band Attenuation	> 65 dB; 25-1104 kHz
Input Impedance (ADSL Band Signal Path Loading)	0.1 dB from 30-1104 kHz
Operating Temperature °F (°C)	
LPF-200	-40 to 158 (-40 to 70)
LPF-200W, LPF-200F	32 to 158 (0 to 70)
Relative Humidity (Non condensing)	0-95%
Fault Current Immunity	Complies to GR-1089 levels I & II Surge and Power Cross
Dimensions (H x W x D) in. (cm)	
LPF-200	2.05 x 0.98 x 2.20 (5.21 x 2.49 x 5.59)
TA-230	2.50 x 3.82 x 5.45 (6.35 x 9.70 x 13.84)
Weight lbs. (kg)	
LPF-200	0.16 (0.07)
TA-230	0.30 (0.14)

NOTE: In-line Micro Filter and Central Office POTS Splitters are available; Contact your sales representative for ordering information.

### Features

- Single width line module footprint is space efficient
- Environmentally sealed
- Same splitter used with adjunct box applications reduces inventory
- Installs in a variety of NIDs
- Quick mounting capability in front of or behind existing indoor wall jacks without drilling mounting holes or replacing existing phone jack
- Low voice band insertion loss and flat voice band attenuation distortion
- Compatible with both CAP and DMT
- Meets the ANSI T1.413 Annex E, ITU-T 992.1 Type 2 North American and Telcordia® requirements
- UL® 1863 Listed

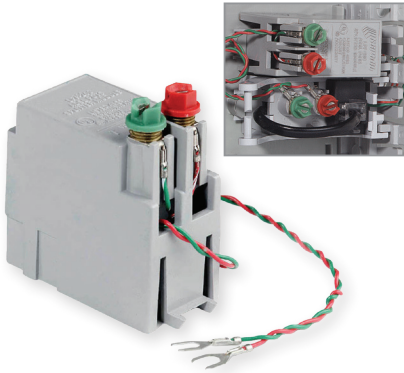
### Ordering Information – Standard Configurations

DESCRIPTION	AFL NO.
LPF-200 ADSL POTS Splitter	911929-00-01
TA-230 Adjunct Box w/ LPF-200 POTS Splitter	911986-00-02
CAC Line Module Adapter (100 per bag)	911996-00-01

Continued 

## LPF-200 Series ADSL POTS Splitters

### LPF-200



- For installation on the CPE side of NID - single width line module package
- Flying leads permit universal connection to any style line module
- Multiple home runs are terminated through four washer screw handoffs
- Fits into SNI-4300, SNI-4600, ML-6, TA™-230 and Siecor® CAC-7600 NIDs

