

LightLink 24 Slim-Line Pedestal

The LightLink (LL) 24 Pedestal provides an easily accessible solution for splicing underground fiber cable, branches and drops. The pedestal may be buried up to the burying guide lines located on the pedestal base.

With the capability to hold up to three Apex™ X-2 Splice Trays, the LL-24 pedestal is capable of up to 216 single fusion, 432 mass fusion with standard ribbon, or 864 mass fusion with “rollable ribbon” fiber types such as AFL’s SpiderWeb Ribbon® (SWR®). One side of the pedestal may be used for splicing optical fibers while the opposite side may be used for copper splicing of branch or drop cables.



Features

- Easily installed in traditional buried pedestal applications
- All cable routing, retention, mounting and grounding accessories included
- Holds up to three (3) Apex X-2 splice trays
- Fiber routing rings allow for easy storage and maintenance of the buffer tubes and using tie-wraps, copper pairs may be secured to the mounting plate
- Defer deployment cost – open buffer tubes when access to fibers is required
- Standard 216-tool or similar tool required to remove the dome

Applications

- FTtx Networks
- Local Area Networks

Specifications

PARAMETER	VALUE
Height to Ground Line, in (cm)	30.2 (77.5)
Total Height, in (cm)	40.2 (102.1)
Inner Diameter, in (cm)	7.8 x 6.0 (19.7 x 15.2) Oval
Splice Capacity – Single, Mass (SWR), Mass (Standard)	216, 864, 432
Splice Tray Capacity	3

Ordering Information

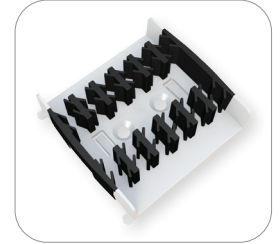
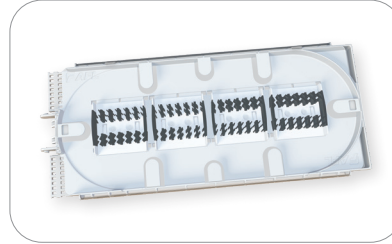
DESCRIPTION	AFL NO.
LL-24 Pedestal, Empty	FE000325

continued
→

LightLink 24 Slim-Line Pedestal

Splice Trays and Splice Modules

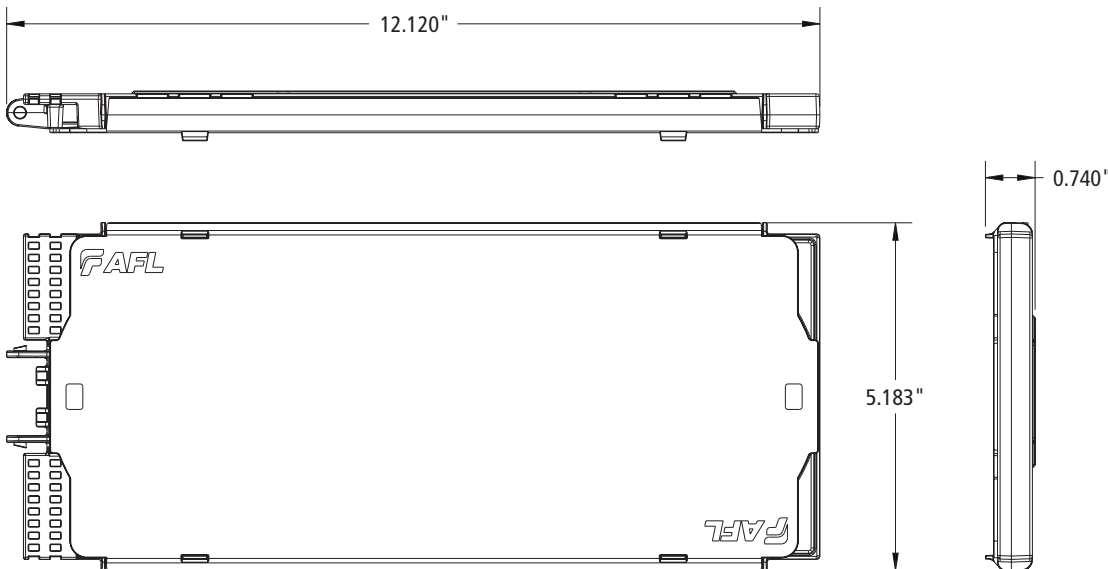
The LL-24 Pedestal utilizes X-2 size splice trays. Trays can be ordered fully loaded or half loaded with splice modules. For “rollable” type ribbon such as AFL’s SpiderWeb Ribbon, trays can be fully loaded for 24 mass splices or 288 fibers per tray. For standard ribbon, AFL recommends half loaded for 12 mass splices single-stacked, or 144 fibers.



Ordering Information

DESCRIPTION	TRAY CAPACITY		AFL NO.
	SINGLE	MASS	
X-2 Tray Loaded with Two Splice Modules	36	144	AX-TRAY-2-2
X-2 Tray Fully Loaded with Four Splice Modules	72	288	AX-TRAY-2-4
Additional splice module (18 single fusion triple stacked, 12 mass fusion double stacked, 6 mechanical) – Pack of 20	—	—	AX-TRAY-MOD-20
X-2 Tray Empty	—	—	AX-TRAY-2-E

Dimensions

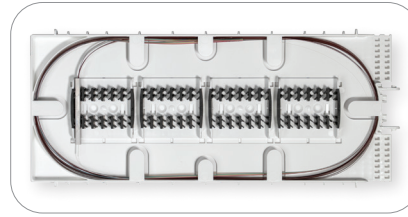


continued
→

LightLink 24 Slim-Line Pedestal

Splitter Splice Trays

Passive optical splitters, or PLCs (Planar Lightwave Circuits), can be provided preinstalled into the Apex X-2 splice tray. PLCs can either be installed and splice within the same tray, or provided with a separate dedicated tray for splicing, with fibers routed between trays using protective tubing. A third option provides one additional tray to separate input and output fiber splicing.



Ordering Information

DESCRIPTION	SPLIT RATIO	AFL NO.
X-2 Tray with Four Splice Modules, (1) 1x2 PLC Splitter	1x2	AX-TRAY-2-12-1
X-2 Tray with Four Splice Modules, (1) 1x4 PLC Splitter	1x4	AX-TRAY-2-14-1
X-2 Tray with Four Splice Modules, (1) 1x8 PLC Splitter	1x8	AX-TRAY-2-18-1
X-2 Tray with Four Splice Modules, (1) 1x16 PLC Splitter	1x16	AX-TRAY-2-116-1
X-2 Tray with Four Splice Modules, (1) 1x32 PLC Splitter	1x32	AX-TRAY-2-132-1
X-2 Tray with (1) 1x2 PLC Splitter and Separate Splicing Tray with Four Splice Modules	1x2	AX-TRAY-2-12-2
X-2 Tray with (1) 1x4 PLC Splitter and Separate Splicing Tray with Four Splice Modules	1x4	AX-TRAY-2-14-2
X-2 Tray with (1) 1x8 PLC Splitter and Separate Splicing Tray with Four Splice Modules	1x8	AX-TRAY-2-18-2
X-2 Tray with (1) 1x16 PLC Splitter and Separate Splicing Tray with Four Splice Modules	1x16	AX-TRAY-2-116-2
X-2 Tray with (1) 1x32 PLC Splitter and Separate Splicing Tray with Four Splice Modules	1x32	AX-TRAY-2-132-2
X-2 Tray with (1) 1x2 PLC Splitter and 2 Separate Splicing Trays with Four Splice Modules each	1x2	AX-TRAY-2-12-3
X-2 Tray with (1) 1x4 PLC Splitter and 2 Separate Splicing Trays with Four Splice Modules each	1x4	AX-TRAY-2-14-3
X-2 Tray with (1) 1x8 PLC Splitter and 2 Separate Splicing Trays with Four Splice Modules each	1x8	AX-TRAY-2-18-3
X-2 Tray with (1) 1x16 PLC Splitter and 2 Separate Splicing Trays with Four Splice Modules each	1x16	AX-TRAY-2-116-3
X-2 Tray with (1) 1x32 PLC Splitter and 2 Separate Splicing Trays with Four Splice Modules each	1x32	AX-TRAY-2-132-3