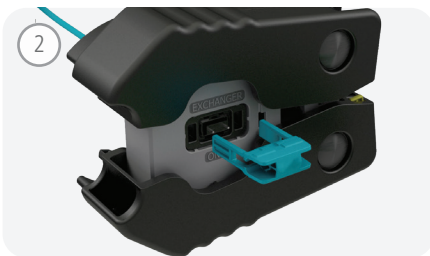


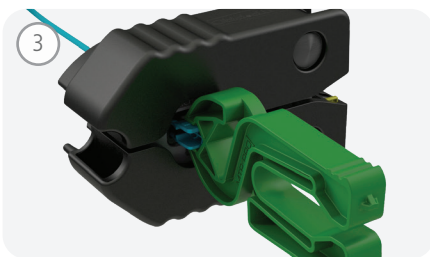
PIN REMOVAL: Male to Female



Insert pinned MTP® PRO Connector in the Pin Change Port until audible "CLICK". Do not compress the black handles.



Align and insert Pin Exchanger on the opposite end of the Pin Change Port until it bottoms.

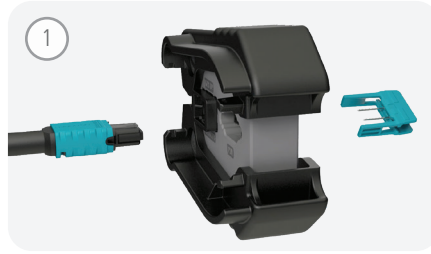


Slide Gripper onto the Pin Exchanger so that it is bottomed and centered. Compress the black MTP® PRO Field Tool handles.

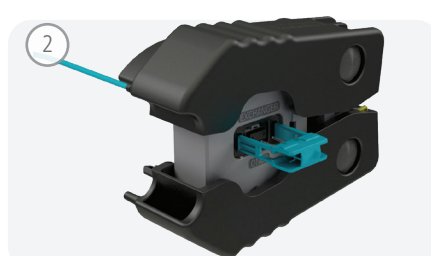


Compress the green Gripper handles **until they touch** and pull the Pin Exchanger out. Verify removal of pins.

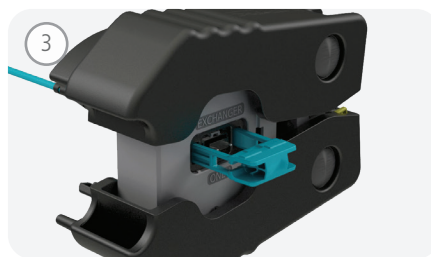
PIN INSERTION: Female to Male



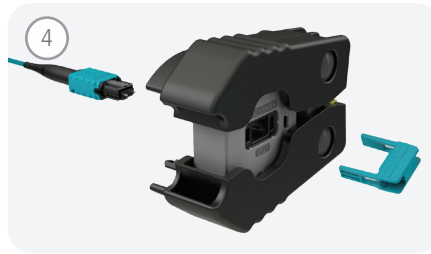
Insert unpinned MTP® PRO Connector in the Pin Change Port until audible "CLICK". **Do not compress the black handles during pin insertion.**



Align Pin Exchanger with pins attached on the opposite end of the Pin Change Port.

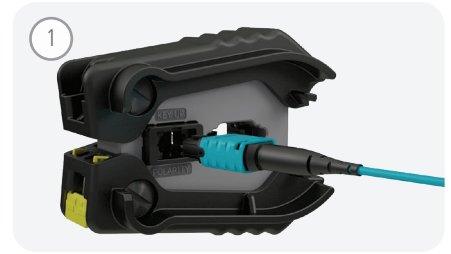


Insert Pin Exchanger into the opposite end of the Pin Change Port until audible "CLICK".



Pull out Pin Exchanger and verify insertion of the pins onto the MTP® PRO connector.

POLARITY CHANGE:



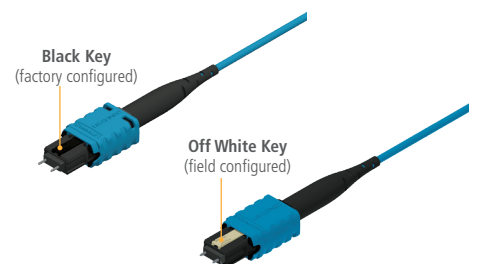
Align key on the MTP® PRO Connector with "KEY UP" on the Polarity Change Port.



Insert the MTP® PRO Connector in the Polarity Change Port until audible "CLICK".



Remove the MTP® PRO Connector from the Polarity Change Port. Verify completion of polarity change.



Scan QR Code to view MTP® PRO field tool in action!