

Noyes Test & Inspection

Installation Procedure for Active Sync on Windows Vista PCs

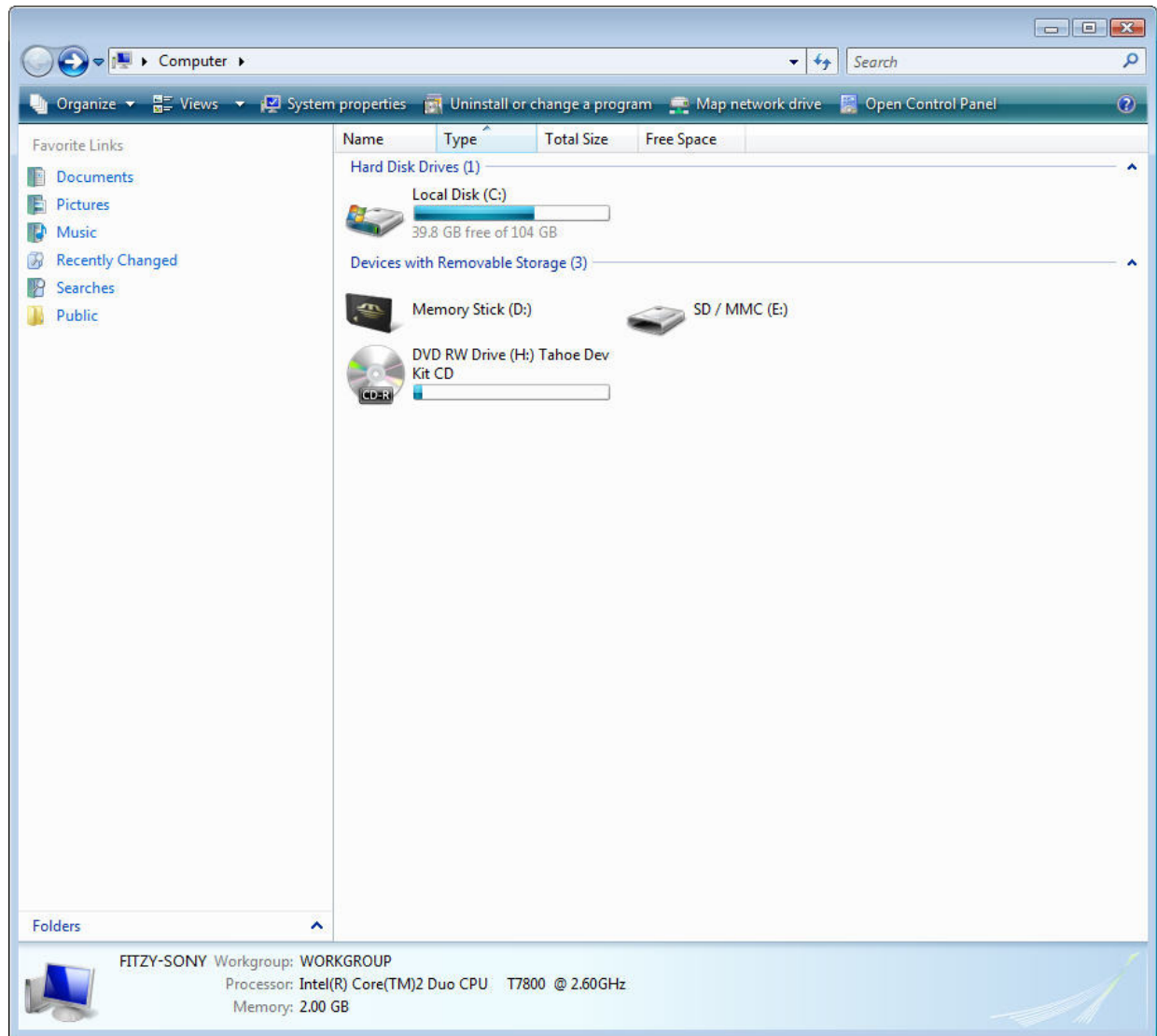
- Turn on M200 OTDR and complete boot up.
- Plug M200 OTDR into Vista PC with mini-USB to USB cable
- When the “Found New Hardware” pop-up appears, hit the Cancel button
- Vista Auto play pop-up will appear. Hit the close button

Click on...

Start,

Computer,

System Properties

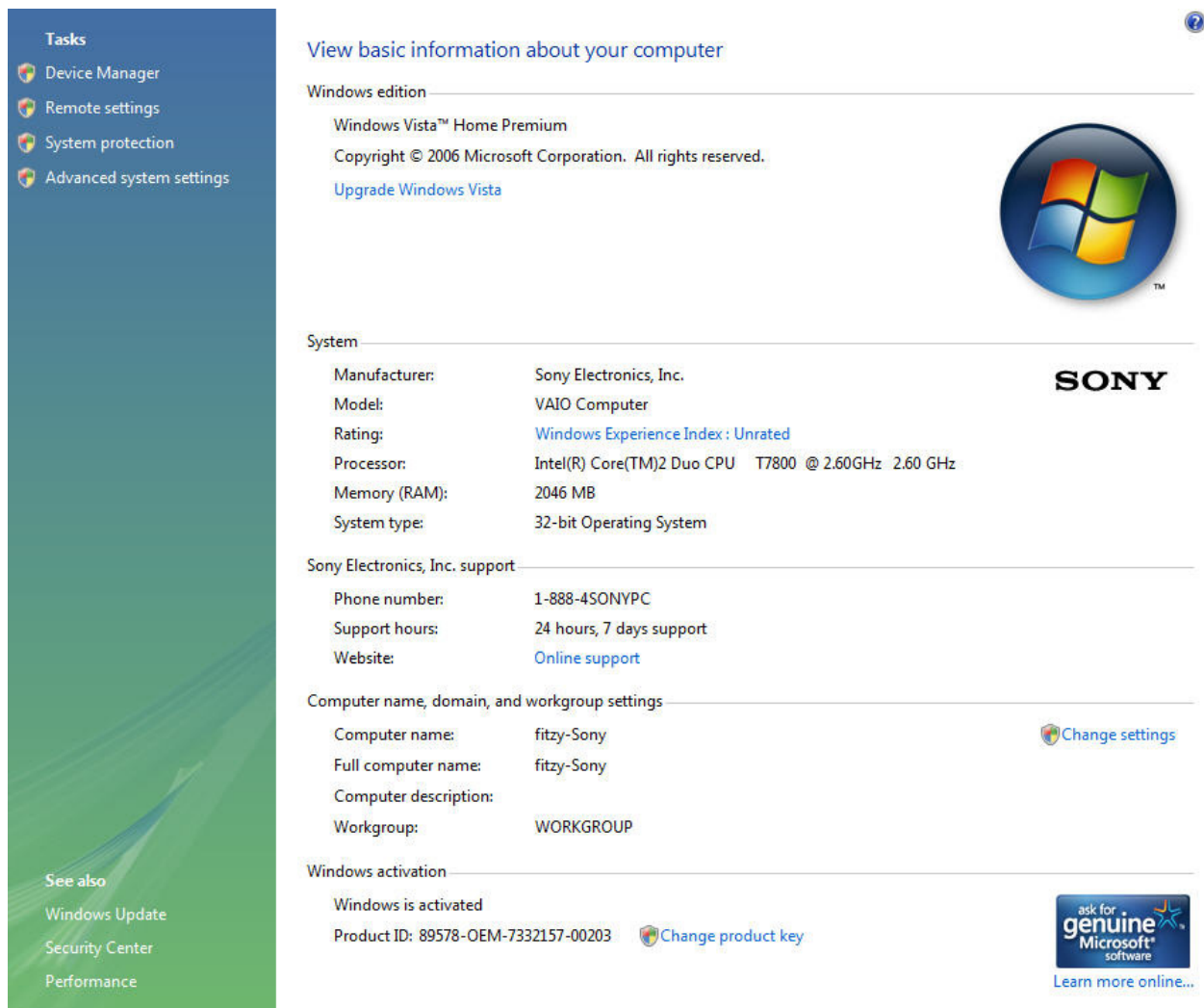


Then click on...

Device Manager,

User Account Control,

then click Continue



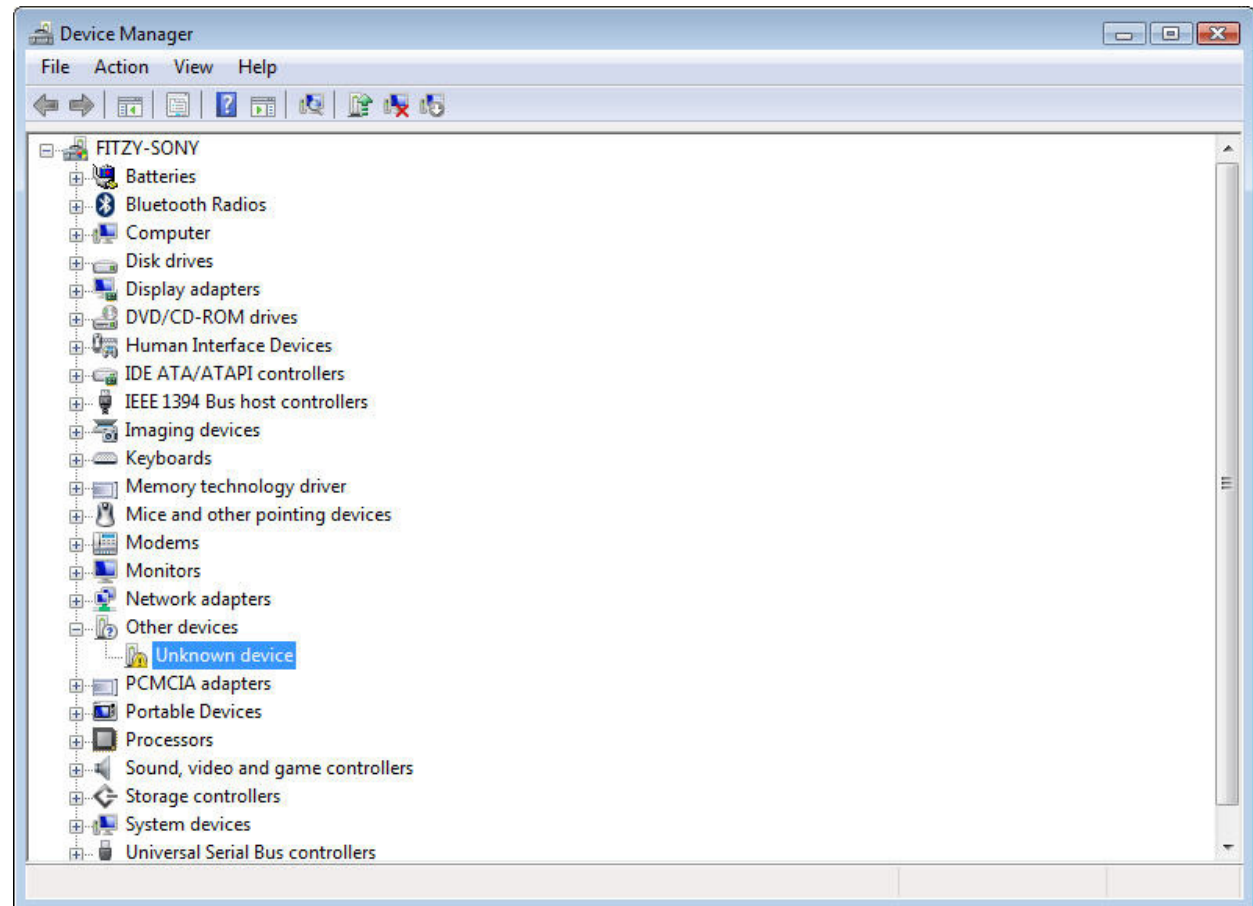
The screenshot shows the Windows Vista System Information page. On the left is a navigation pane with a 'Tasks' section containing links to Device Manager, Remote settings, System protection, and Advanced system settings. Below this is a 'See also' section with links to Windows Update, Security Center, and Performance. The main content area is titled 'View basic information about your computer' and includes a help icon. It is divided into several sections: 'Windows edition' (Windows Vista™ Home Premium, Copyright © 2006 Microsoft Corporation, All rights reserved., Upgrade Windows Vista), 'System' (Manufacturer: Sony Electronics, Inc.; Model: VAIO Computer; Rating: Windows Experience Index : Unrated; Processor: Intel(R) Core(TM)2 Duo CPU T7800 @ 2.60GHz 2.60 GHz; Memory (RAM): 2046 MB; System type: 32-bit Operating System), 'Sony Electronics, Inc. support' (Phone number: 1-888-4SONYPC; Support hours: 24 hours, 7 days support; Website: Online support), 'Computer name, domain, and workgroup settings' (Computer name: fitzy-Sony; Full computer name: fitzy-Sony; Computer description: ; Workgroup: WORKGROUP), and 'Windows activation' (Windows is activated; Product ID: 89578-OEM-7332157-00203; Change product key). On the right side, there is a large Windows logo, the Sony logo, and a 'genuine Microsoft software' logo with a link to 'Learn more online...'. A question mark icon is visible in the top right corner of the main content area.

In Device Manager search for:

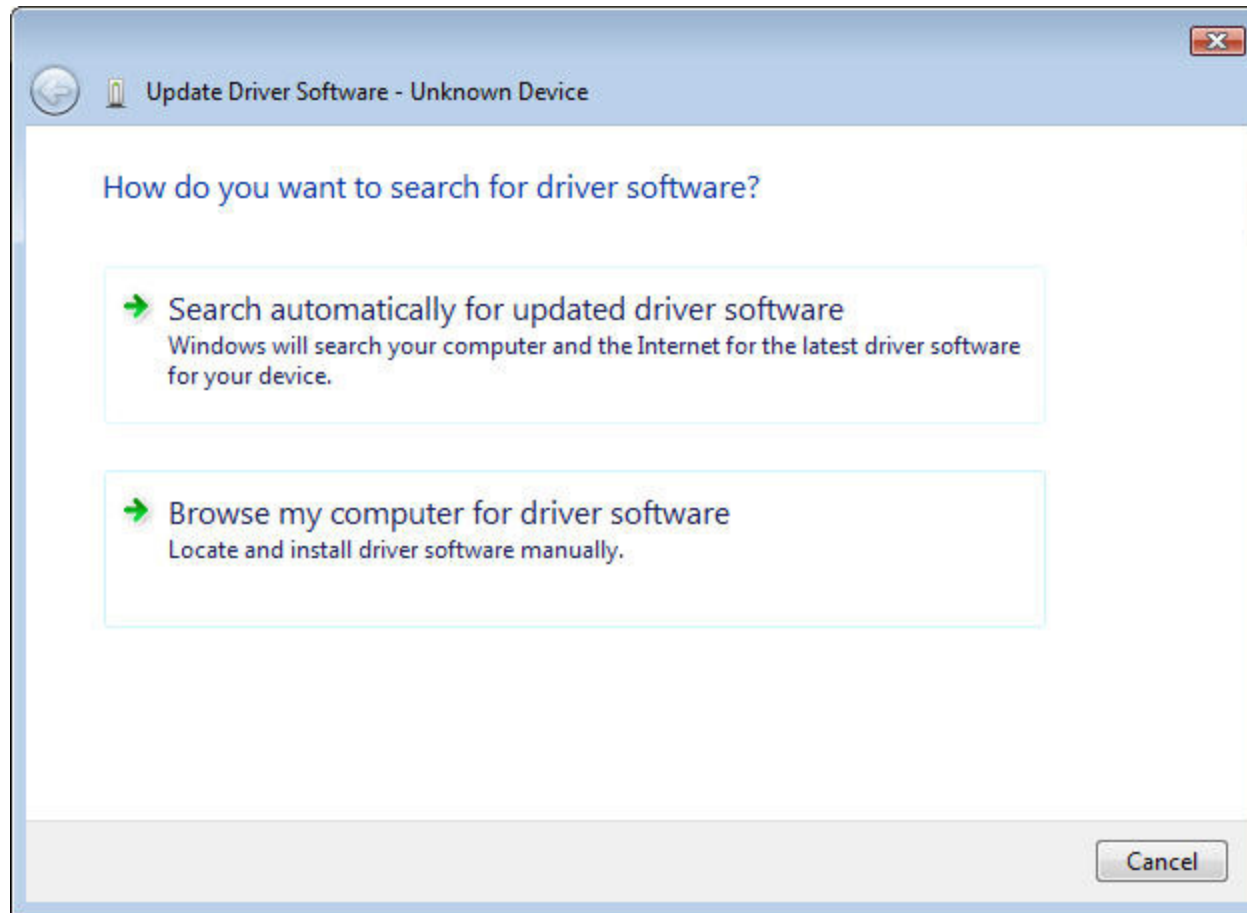
- Other devices
 Unknown device

Right click Unknown device

Select: Update Drive Software

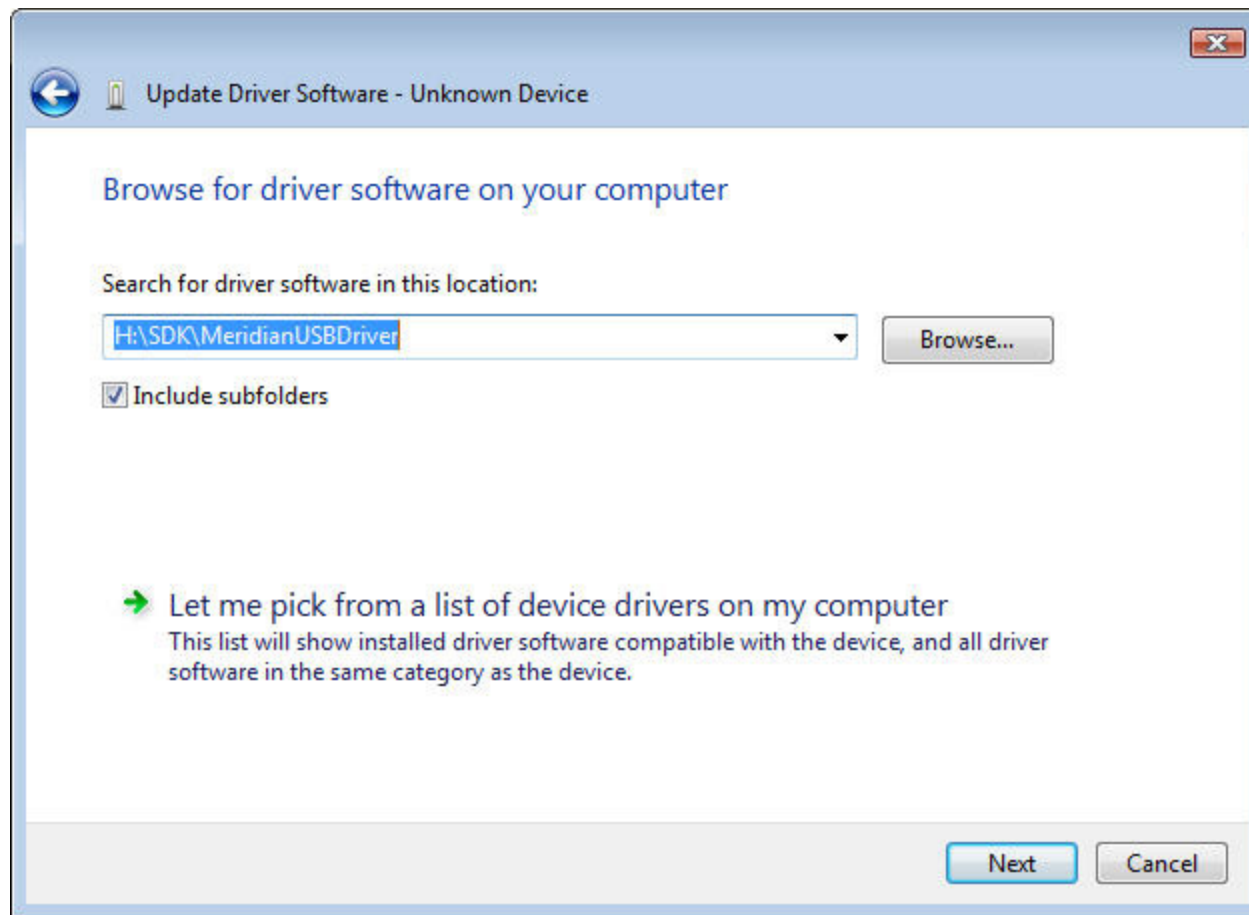


Select: **Browse my computer for driver software**



Select: Let me pick from a list of devices drivers on my computer

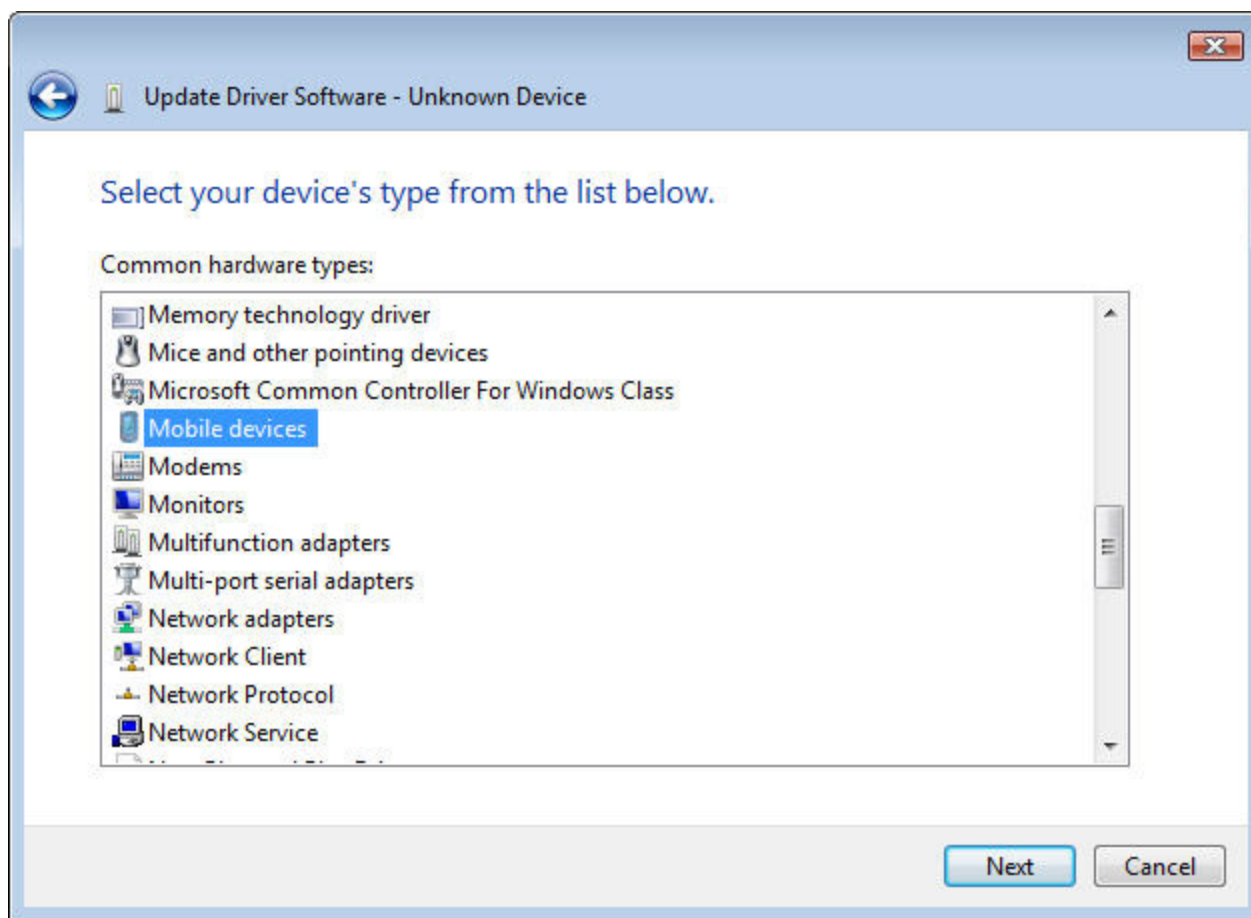
Click: Next



From “Select your device’s type...”

Click “Mobile devices”

Then click Next

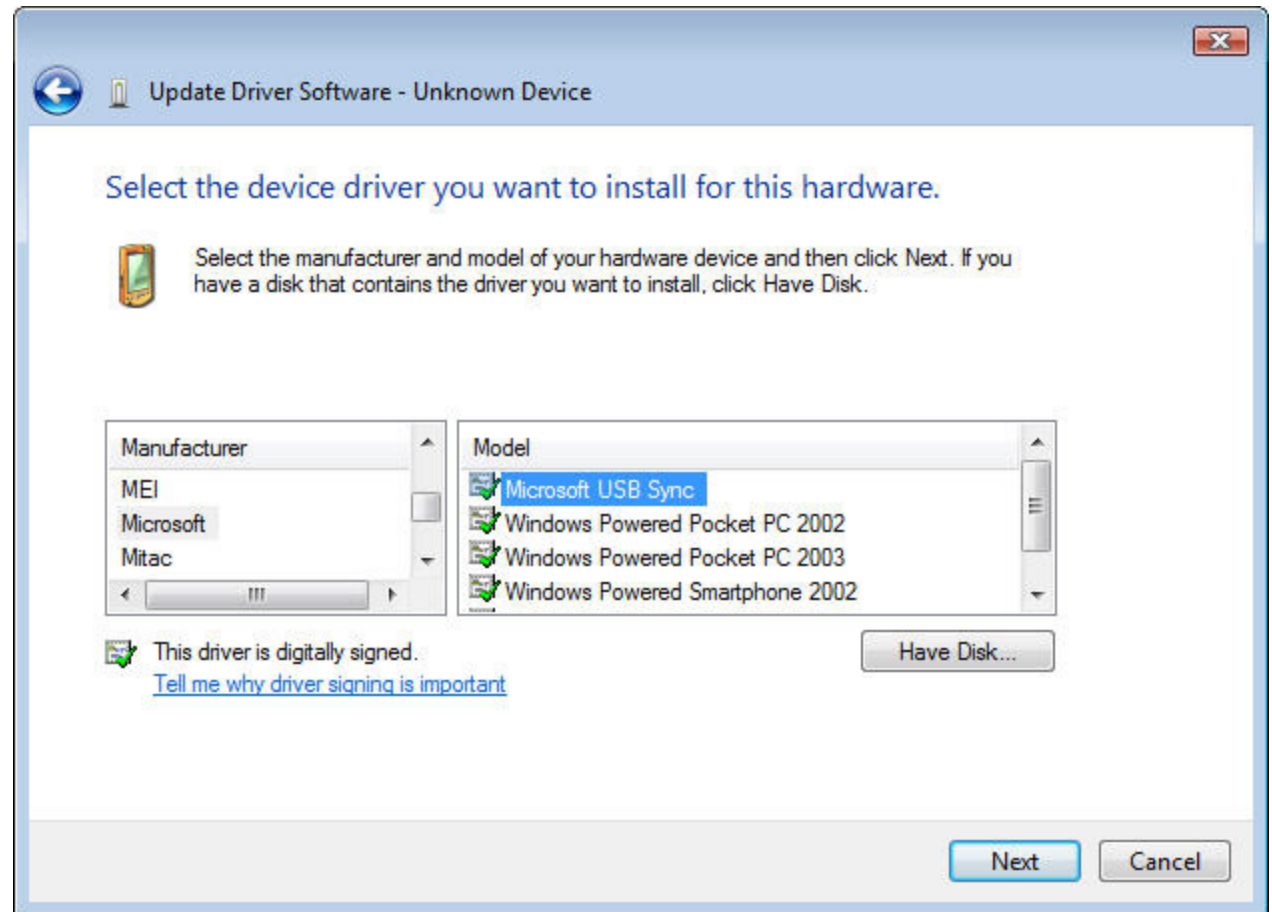


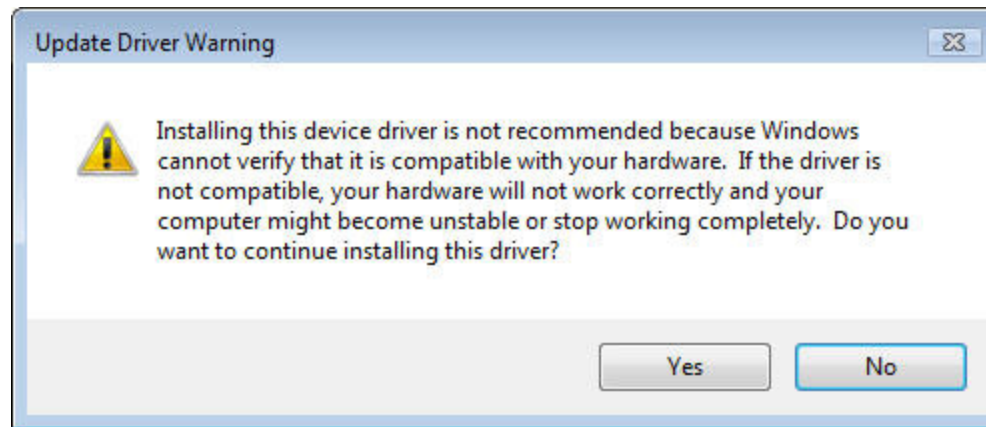
Select:

Manufacturer/Microsoft

Model/Microsoft USB Sync

Then hit Next

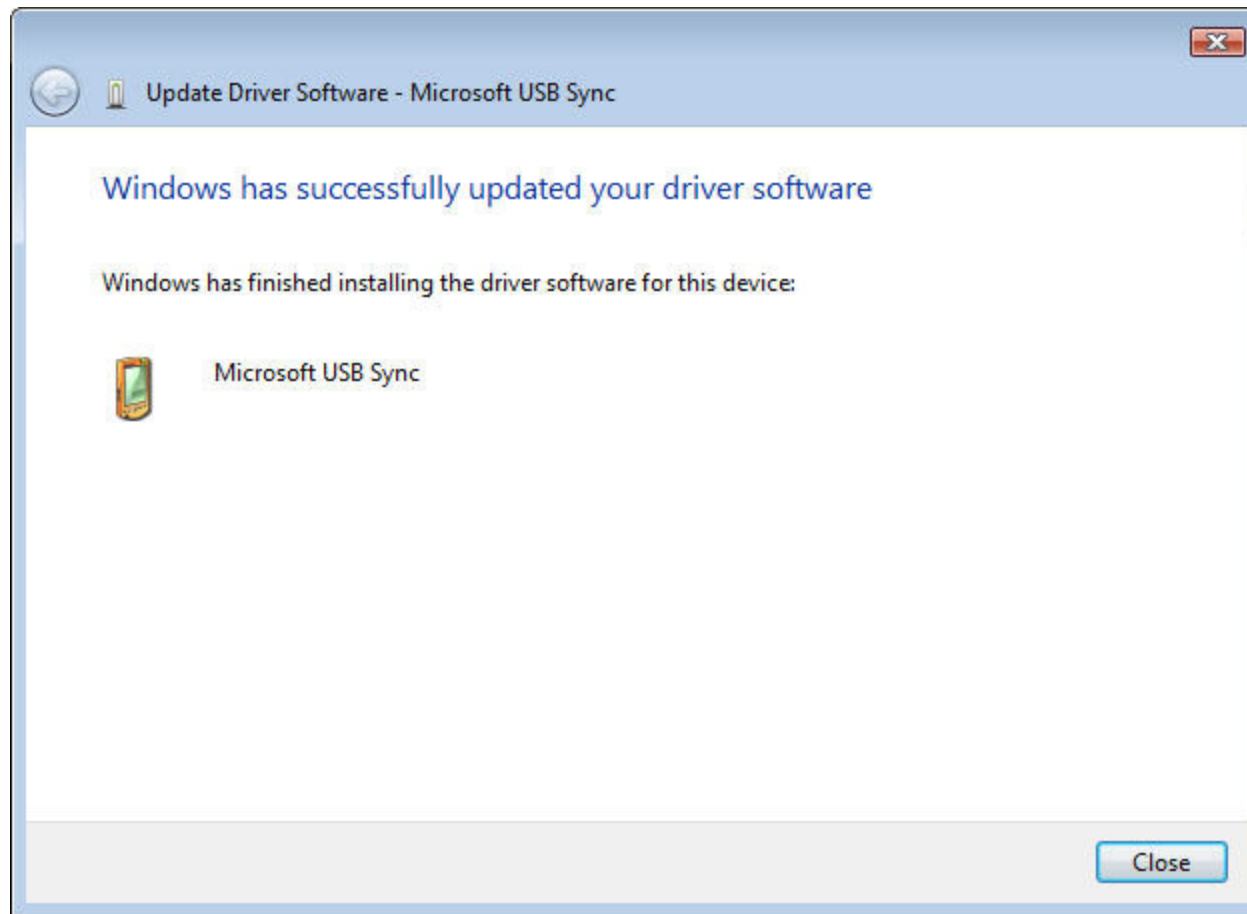




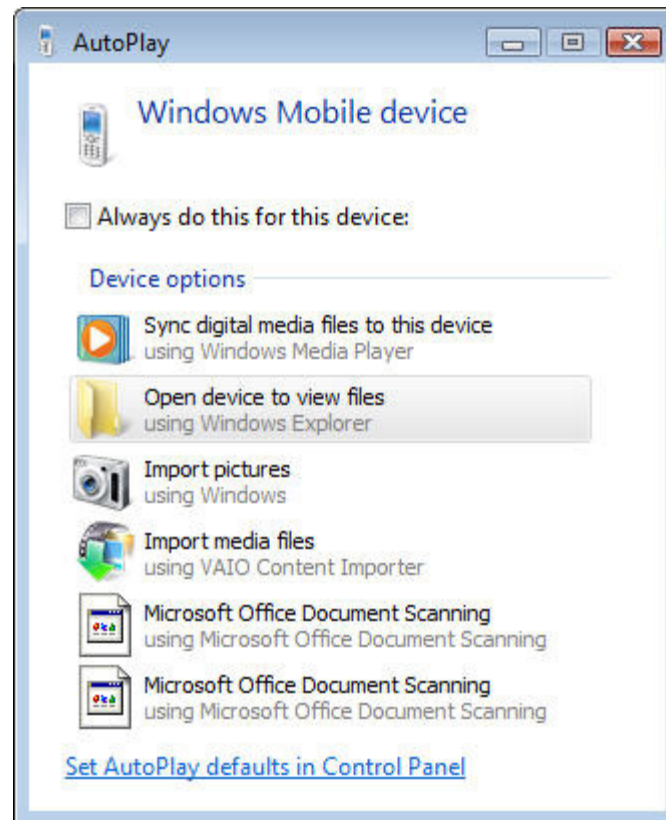
When “Update Driver Warning” pop-up appears, click Yes

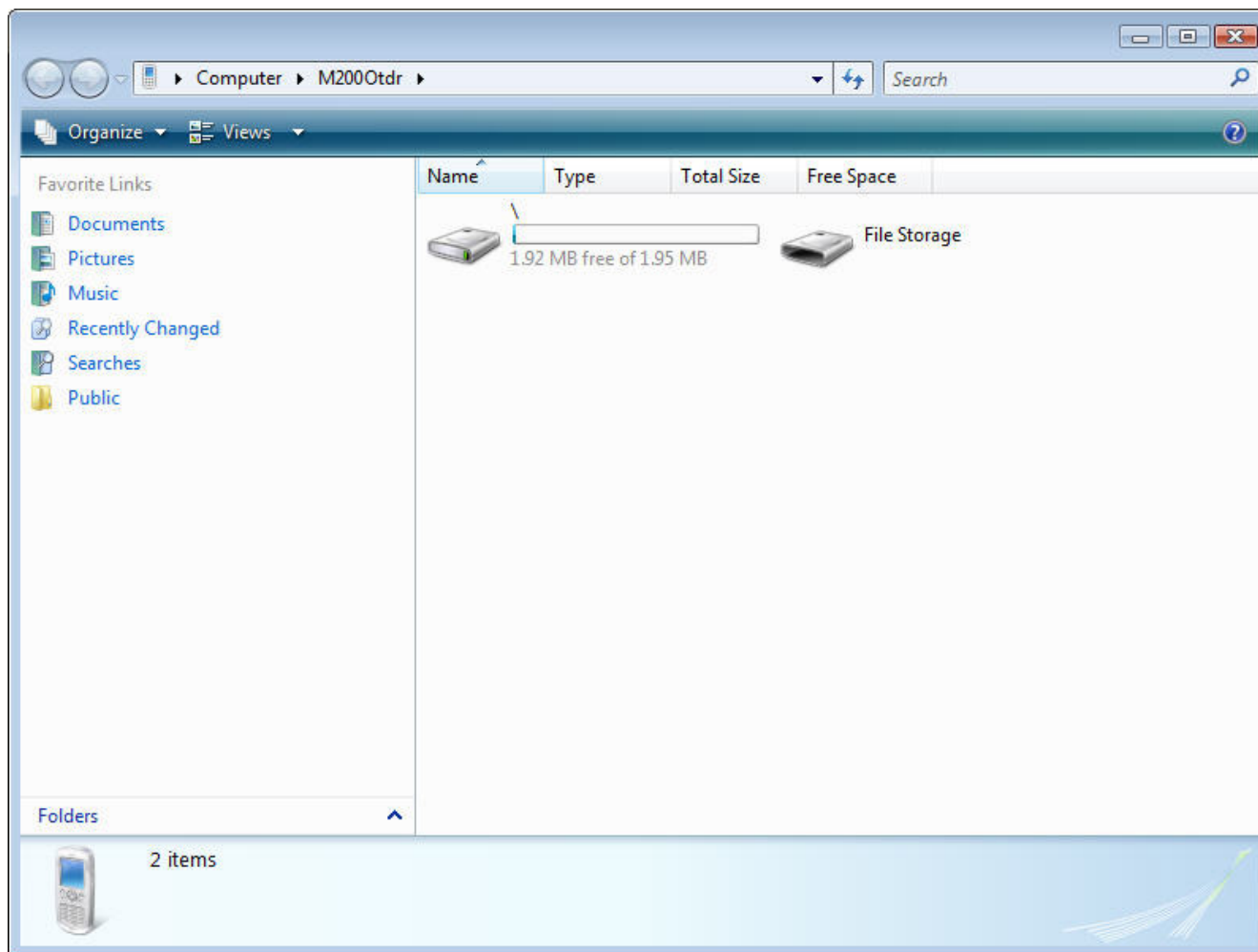
Congratulations, you have successfully updated your driver software.

Click Close



To confirm Windows recognizes your M200, click on “Open device to view files”





Under folders, click on M200 OTDR/File Storage to view trace files

Questions?

www.AFLtele.com

**800-321-5298 or
603-528-7780**